

Datasheet for ABIN3031505
anti-ISL1 antibody (AA 156-185)[Go to Product page](#)

3 Images

Overview

Quantity:	0.4 mL
Target:	ISL1
Binding Specificity:	AA 156-185
Reactivity:	Human, Mouse
Host:	Rabbit
Clonality:	Polyclonal
Conjugate:	This ISL1 antibody is un-conjugated
Application:	Western Blotting (WB), ELISA

Product Details

Immunogen:	A portion of amino acids 156-185 from the human protein was used as the immunogen for this ISL1 antibody.
Isotype:	Ig Fraction
Cross-Reactivity (Details):	Expected species reactivity: Rat, Chicken, Zebrafish
Purification:	Antigen affinity purified

Target Details

Target:	ISL1
Alternative Name:	ISL1 (ISL1 Products)
Background:	ISL1 is a member of the LIM/homeodomain family of transcription factors. The encoded

Target Details

protein binds to the enhancer region of the insulin gene, among others, and may play an important role in regulating insulin gene expression. The encoded protein is central to the development of pancreatic cell lineages and may also be required for motor neuron generation. Mutations in this gene have been associated with maturity-onset diabetes of the young.

UniProt: [P61371](#)

Pathways: [Positive Regulation of Peptide Hormone Secretion](#), [Intracellular Steroid Hormone Receptor Signaling Pathway](#), [Peptide Hormone Metabolism](#), [Regulation of Intracellular Steroid Hormone Receptor Signaling](#), [Nuclear Hormone Receptor Binding](#), [Chromatin Binding](#)

Application Details

Application Notes: Titration of the ISL1 antibody may be required due to differences in protocols and secondary/substrate sensitivity.\. Western blot: 1:1000

Restrictions: For Research Use only

Handling

Format: Liquid

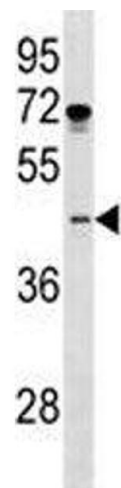
Buffer: In 1X PBS, pH 7.4, with 0.09 % sodium azide

Preservative: Sodium azide

Precaution of Use: This product contains Sodium azide: a POISONOUS AND HAZARDOUS SUBSTANCE which should be handled by trained staff only.

Storage: -20 °C

Storage Comment: Aliquot the ISL1 antibody and store frozen at -20°C or colder. Avoid repeated freeze-thaw cycles.



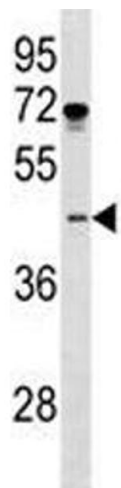
Western Blotting

Image 1. ISL1 antibody western blot analysis in MDA-MB231 lysate. Predicted molecular weight ~39 kDa.



Western Blotting

Image 2. ISL1 antibody western blot analysis in mouse bladder tissue lysate. Predicted molecular weight ~39 kDa.



Western Blotting

Image 3. ISL1 antibody western blot analysis in MDA-MB231 lysate. Predicted molecular weight ~39 kDa.