

Datasheet for ABIN3031506
anti-IDH1 antibody (AA 116-143)

10 Images

[Go to Product page](#)

Overview

Quantity:	0.4 mL
Target:	IDH1
Binding Specificity:	AA 116-143
Reactivity:	Human, Mouse
Host:	Rabbit
Clonality:	Polyclonal
Conjugate:	This IDH1 antibody is un-conjugated
Application:	Western Blotting (WB), Immunohistochemistry (IHC), ELISA, Flow Cytometry (FACS), Immunofluorescence (IF)

Product Details

Immunogen:	A portion of amino acids 116-143 from the human protein was used as the immunogen for this IDH1 antibody.
Isotype:	Ig Fraction
Cross-Reactivity (Details):	Expected species reactivity: Rat, Bovine
Purification:	Purified

Target Details

Target:	IDH1
Alternative Name:	IDH1 (IDH1 Products)

Target Details

Background: IDH1 belongs to two distinct subclasses. The protein is the NADP(+)-dependent Isocitrate Dehydrogenase found in the cytoplasm and peroxisomes. This protein contains the PTS-1 peroxisomal targeting signal sequence. The presence of this enzyme in peroxisomes suggests roles in the regeneration of NADPH for intraperoxisomal reductions, such as the conversion of 2, 4-dienoyl-CoAs to 3-enoyl-CoAs, as well as in peroxisomal reactions that consume 2-oxoglutarate, namely the alpha-hydroxylation of phytanic acid. The cytoplasmic enzyme serves a significant role in cytoplasmic NADPH production. [Wiki]

UniProt: [O75874](#)

Pathways: [Warburg Effect](#)

Application Details

Application Notes: Titration of the IDH1 antibody may be required due to differences in protocols and secondary/substrate sensitivity.\. Western blot: 1:1000,Immunofluorescence: 1:10-1:50,IHC (Paraffin): 1:50-1:100,Flow Cytometry: 1:10-1:50

Restrictions: For Research Use only

Handling

Format: Liquid

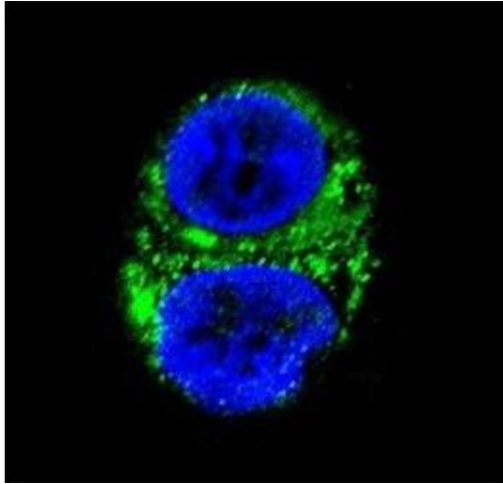
Buffer: In 1X PBS, pH 7.4, with 0.09 % sodium azide

Preservative: Sodium azide

Precaution of Use: This product contains Sodium azide: a POISONOUS AND HAZARDOUS SUBSTANCE which should be handled by trained staff only.

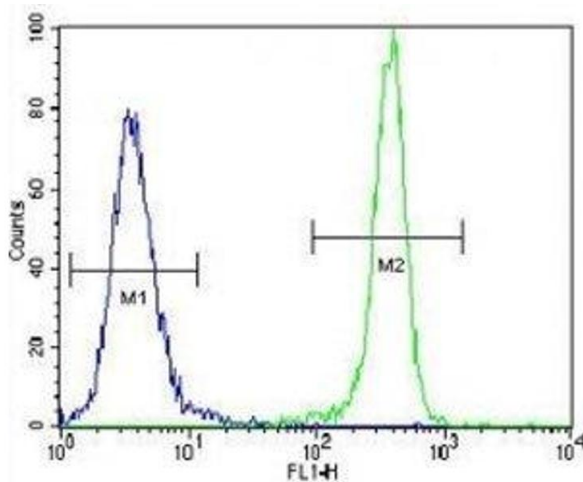
Storage: -20 °C

Storage Comment: Aliquot the IDH1 antibody and store frozen at -20°C or colder. Avoid repeated freeze-thaw cycles.



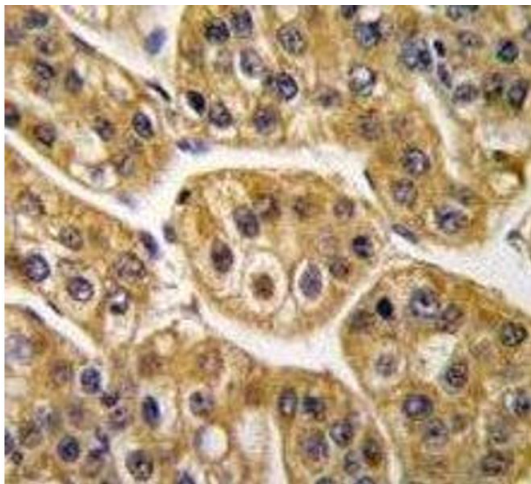
Immunofluorescence

Image 1. Confocal immunofluorescent analysis of IDH1 antibody with HepG2 cells followed by Alexa Fluor 488-conjugated goat anti-rabbit IgG (green). DAPI was used as a nuclear counterstain (blue).



Flow Cytometry

Image 2. IDH1 antibody flow cytometric analysis of 293 cells (right histogram) compared to a negative control (left histogram). FITC-conjugated goat-anti-rabbit secondary Ab was used for the analysis.



Immunohistochemistry

Image 3. IHC analysis of FFPE human hepatocarcinoma tissue stained with IDH1 antibody

Please check the [product details page](#) for more images. Overall 10 images are available for ABIN3031506.