



[Go to Product page](#)

Datasheet for ABIN3031507  
**anti-IDH1 antibody (AA 63-90)**

7 Images

### Overview

Quantity:	0.4 mL
Target:	IDH1
Binding Specificity:	AA 63-90
Reactivity:	Human, Mouse
Host:	Rabbit
Clonality:	Polyclonal
Conjugate:	This IDH1 antibody is un-conjugated
Application:	Western Blotting (WB), Immunohistochemistry (IHC), ELISA, Flow Cytometry (FACS), Immunofluorescence (IF)

### Product Details

Immunogen:	A portion of amino acids 63-90 from the human protein was used as the immunogen for this IDH antibody.
Isotype:	Ig Fraction
Cross-Reactivity (Details):	Expected species reactivity: Rat, Bovine
Purification:	Purified

### Target Details

Target:	IDH1
Alternative Name:	IDH1 ( <a href="#">IDH1 Products</a> )

## Target Details

---

**Background:** The protein is the NADP(+)-dependent Isocitrate Dehydrogenase found in the cytoplasm and peroxisomes. This protein contains the PTS-1 peroxisomal targeting signal sequence. The presence of this enzyme in peroxisomes suggests roles in the regeneration of NADPH for intraperoxisomal reductions. [Wiki]

**UniProt:** [O75874](#)

**Pathways:** [Warburg Effect](#)

## Application Details

---

**Application Notes:** Titration of the IDH antibody may be required due to differences in protocols and secondary/substrate sensitivity.\. Immunofluorescence: 1:10-1:50,Western blot: 1:1000,IHC (Paraffin): 1:50-1:100,Flow Cytometry: 1:10-1:50

**Restrictions:** For Research Use only

## Handling

---

**Format:** Liquid

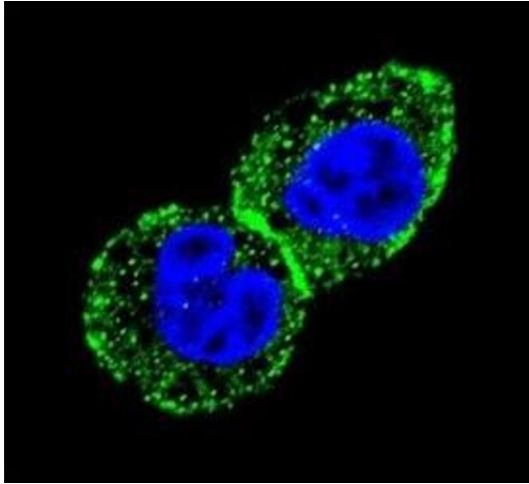
**Buffer:** In 1X PBS, pH 7.4, with 0.09 % sodium azide

**Preservative:** Sodium azide

**Precaution of Use:** This product contains Sodium azide: a POISONOUS AND HAZARDOUS SUBSTANCE which should be handled by trained staff only.

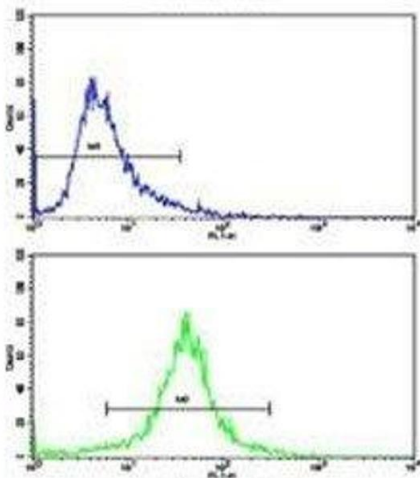
**Storage:** -20 °C

**Storage Comment:** Aliquot the IDH antibody and store frozen at -20°C or colder. Avoid repeated freeze-thaw cycles.



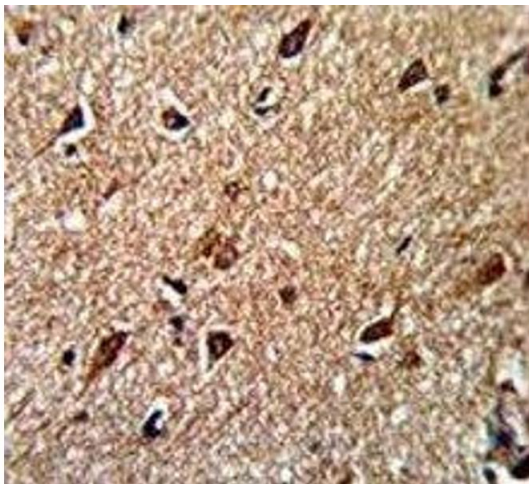
### Immunofluorescence

**Image 1.** Confocal immunofluorescent analysis of IDH antibody with HepG2 cells followed by Alexa Fluor 488-conjugated goat anti-rabbit IgG (green) and DAPI nuclear counterstain (blue).



### Flow Cytometry

**Image 2.** Flow cytometric analysis of 293 cells using IDH antibody (bottom histogram) compared to a negative control (top histogram).



### Immunohistochemistry

**Image 3.** IHC analysis of FFPE human brain stained with IDH antibody

Please check the [product details page](#) for more images. Overall 7 images are available for ABIN3031507.