

Datasheet for ABIN3031533
anti-KEAP1 antibody (AA 422-449)



[Go to Product page](#)

3 Images

Overview

Quantity:	0.4 mL
Target:	KEAP1
Binding Specificity:	AA 422-449
Reactivity:	Human
Host:	Rabbit
Clonality:	Polyclonal
Conjugate:	This KEAP1 antibody is un-conjugated
Application:	Western Blotting (WB), ELISA, Immunohistochemistry (IHC)

Product Details

Immunogen:	A portion of amino acids 422-449 from the human protein was used as the immunogen for this KEAP1 antibody.
Isotype:	Ig Fraction
Cross-Reactivity (Details):	Expected species reactivity: Pig
Purification:	Antigen affinity purified

Target Details

Target:	KEAP1
Alternative Name:	KEAP1 (KEAP1 Products)
Background:	KEAP1 acts as a substrate adapter protein for the E3 ubiquitin ligase complex formed by CUL3

Target Details

and RBX1 and targets NFE2L2/NRF2 for ubiquitination and degradation by the proteasome, thus resulting in the suppression of its transcriptional activity and the repression of antioxidant response element-mediated detoxifying enzyme gene expression. Retains NFE2L2/NRF2 and may also retain BPTF in the cytosol. Targets PGAM5 for ubiquitination and degradation by the proteasome [UniProt]

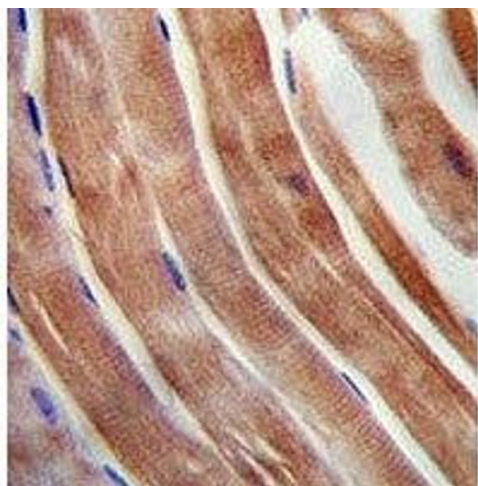
UniProt:	Q14145
Pathways:	Maintenance of Protein Location

Application Details

Application Notes:	The stated application concentrations are suggested starting amounts. Titration of the KEAP1 antibody may be required due to differences in protocols and secondary/substrate sensitivity.\. Western blot: 1:1000,IHC (Paraffin): 1:50-1:100
Restrictions:	For Research Use only

Handling

Format:	Liquid
Buffer:	In 1X PBS, pH 7.4, with 0.09 % sodium azide
Preservative:	Sodium azide
Precaution of Use:	This product contains Sodium azide: a POISONOUS AND HAZARDOUS SUBSTANCE which should be handled by trained staff only.
Storage:	-20 °C
Storage Comment:	Store at 4°C for up to one month. For long term, aliquot the KEAP1 antibody and store frozen at -20°C or colder. Avoid repeated freeze-thaw cycles.



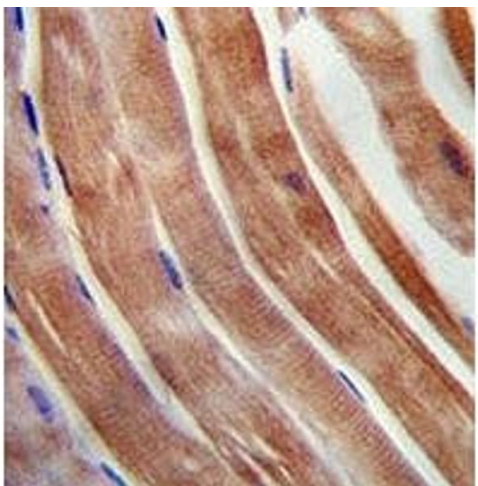
Immunohistochemistry

Image 1. KEAP1 antibody immunohistochemistry analysis in formalin fixed and paraffin embedded human skeletal muscle.



Western Blotting

Image 2. KEAP1 antibody western blot analysis in HepG2 lysate. Predicted molecular weight ~70 kDa.



Immunohistochemistry

Image 3. KEAP1 antibody immunohistochemistry analysis in formalin fixed and paraffin embedded human skeletal muscle.