



[Go to Product page](#)

Datasheet for ABIN3031536  
**anti-KRT14 antibody (AA 276-303)**

5 Images

Overview

Quantity:	0.4 mL
Target:	KRT14
Binding Specificity:	AA 276-303
Reactivity:	Human, Mouse
Host:	Rabbit
Clonality:	Polyclonal
Conjugate:	This KRT14 antibody is un-conjugated
Application:	Western Blotting (WB), Immunohistochemistry (IHC), ELISA, Flow Cytometry (FACS)

Product Details

Immunogen:	A portion of amino acids 276-303 from the human protein was used as the immunogen for this Keratin-14 antibody.
Isotype:	Ig Fraction
Cross-Reactivity (Details):	Expected species reactivity: Rat, Bovine
Purification:	Purified

Target Details

Target:	KRT14
Alternative Name:	Keratin-14 ( <a href="#">KRT14 Products</a> )
Background:	KRT14 is a member of the keratin family, the most diverse group of intermediate filaments.

## Target Details

---

This protein, a type I keratin, is usually found as a heterotetramer with two keratin 5 Molecules, a type II keratin. Together they form the cytoskeleton of epithelial cells.

UniProt: [P02533](#)

## Application Details

---

Application Notes: Titration of the Keratin-14 antibody may be required due to differences in protocols and secondary/substrate sensitivity.\. Western blot: 1:1000,IHC (Paraffin): 1:50-1:100,Flow Cytometry: 1:10-1:50

Restrictions: For Research Use only

## Handling

---

Format: Liquid

Buffer: In 1X PBS, pH 7.4, with 0.09 % sodium azide

Preservative: Sodium azide

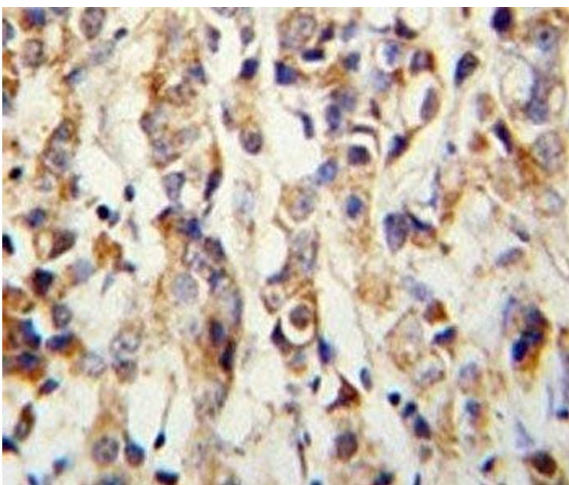
Precaution of Use: This product contains Sodium azide: a POISONOUS AND HAZARDOUS SUBSTANCE which should be handled by trained staff only.

Storage: -20 °C

Storage Comment: Aliquot the Keratin-14 antibody and store frozen at -20°C or colder. Avoid repeated freeze-thaw cycles.

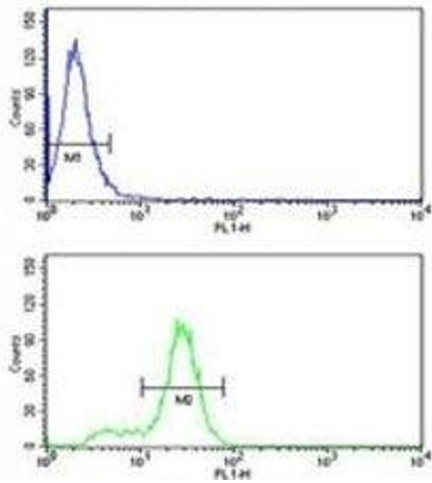
## Images

---



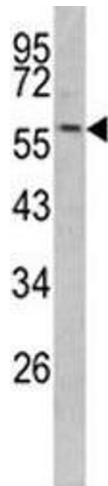
### Immunohistochemistry

**Image 1.** IHC analysis of FFPE human breast carcinoma with Keratin-14 antibody



### Flow Cytometry

**Image 2.** Keratin-14 antibody flow cytometry analysis of MDA-MB231 cells (bottom histogram) compared to a negative control (top histogram). FITC-conjugated goat-anti-rabbit secondary Ab was use



### Western Blotting

**Image 3.** Western blot analysis of Keratin-14 antibody and mouse NIH3T3 lysate

Please check the [product details page](#) for more images. Overall 5 images are available for ABIN3031536.