

Datasheet for ABIN3031561  
**anti-KIT Ligand antibody (AA 244-273)**[Go to Product page](#)

## 7 Images

## Overview

Quantity:	0.4 mL
Target:	KIT Ligand (KITLG)
Binding Specificity:	AA 244-273
Reactivity:	Human
Host:	Rabbit
Clonality:	Polyclonal
Conjugate:	This KIT Ligand antibody is un-conjugated
Application:	Western Blotting (WB), ELISA, Flow Cytometry (FACS), Immunofluorescence (IF)

## Product Details

Immunogen:	A portion of amino acids 244-273 from the human protein was used as the immunogen for this SCF antibody.
Isotype:	Ig Fraction
Cross-Reactivity (Details):	Expected species reactivity: Bovine, Pig
Purification:	Purified

## Target Details

Target:	KIT Ligand (KITLG)
Alternative Name:	SCF ( <a href="#">KITLG Products</a> )
Background:	KITLG is the ligand of the tyrosine-kinase receptor encoded by the KIT locus. This ligand is a

## Target Details

pleiotropic factor that acts in utero in germ cell and neural cell development, and hematopoiesis, all believed to reflect a role in cell migration. In adults, it functions pleiotropically, while mostly noted for its continued requirement in hematopoiesis.

UniProt: [P21583](#)

Pathways: [RTK Signaling](#), [Fc-epsilon Receptor Signaling Pathway](#), [EGFR Signaling Pathway](#), [Neurotrophin Signaling Pathway](#)

## Application Details

Application Notes: Titration of the SCF antibody may be required due to differences in protocols and secondary/substrate sensitivity.\. Western blot: 1:1000,Immunofluorescence: 1:10-1:50,Flow Cytometry: 1:10-1:50

Restrictions: For Research Use only

## Handling

Format: Liquid

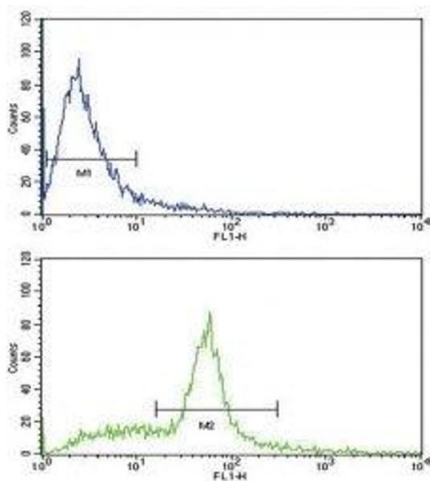
Buffer: In 1X PBS, pH 7.4, with 0.09 % sodium azide

Preservative: Sodium azide

Precaution of Use: This product contains Sodium azide: a POISONOUS AND HAZARDOUS SUBSTANCE which should be handled by trained staff only.

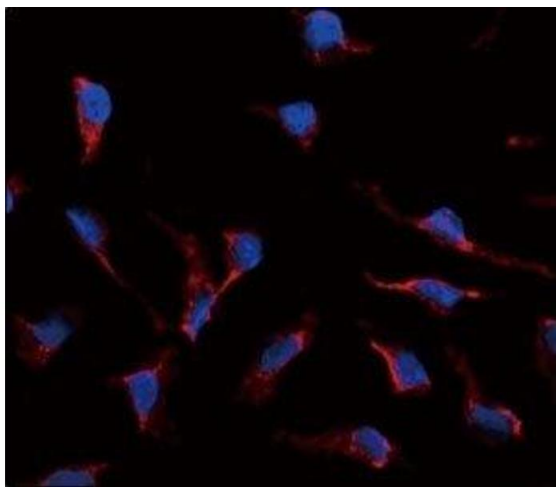
Storage: -20 °C

Storage Comment: Aliquot the SCF antibody and store frozen at -20°C or colder. Avoid repeated freeze-thaw cycles.



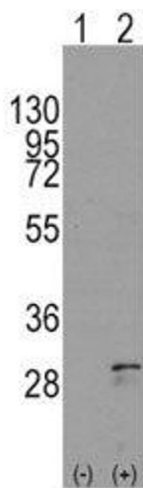
### Flow Cytometry

**Image 1.** Flow cytometric analysis of WiDr cells using SCF antibody (green)



### Immunofluorescence

**Image 2.** Immunofluorescence analysis of SCF antibody and HeLa cells. Alexa Fluor 546 secondary emits orange fluorescence. Blue counterstaining is DAPI.



### Western Blotting

**Image 3.** Western blot analysis of SCF antibody and 293 cell lysate either nontransfected (Lane 1) or transiently transfected with the KITLG gene (2).

Please check the [product details page](#) for more images. Overall 7 images are available for ABIN3031561.