

Datasheet for ABIN3031564
anti-KLF3 antibody (N-Term)[Go to Product page](#)

2 Images

Overview

Quantity:	100 µg
Target:	KLF3
Binding Specificity:	N-Term
Reactivity:	Human, Mouse, Rat
Host:	Rabbit
Clonality:	Polyclonal
Conjugate:	This KLF3 antibody is un-conjugated
Application:	Western Blotting (WB)

Product Details

Immunogen:	An amino acid sequence from the N-terminus of human KLF3 (SYPSNYMESMKPNKY) was used as the immunogen for this KLF3 antibody.
Isotype:	IgG
Purification:	Antigen affinity

Target Details

Target:	KLF3
Alternative Name:	KLF3 (KLF3 Products)
Background:	Kruppel-like factor 3 is a protein that in humans is encoded by the KLF3 gene. It is also known as BKLF (Basic kruppel-like factor). KLF3 is a member of the Krüppel-like factors family of transcription factors. It primarily represses transcription through the transcriptional corepressor

Target Details

C-terminal binding protein (CtBP). Suske et al.(2005) stated that the human gene maps to chromosome 4p14, and the mouse gene maps to chromosome 5C3.3. Suske et al.(2005) stated that the human and mouse KLF3 proteins contain 345 and 344 amino acids, respectively. Both have a characteristic zinc finger domain, but lack the N-terminal buttonhead box found in related SP transcription factors. The repression mediated through KLF3 is also partially dependent on the sumoylation of its K10 and K197. Within KLF3's C-terminal, which is highly conserved throughout the KLF family, resides three C2H2 zinc fingers that preferentially bind the site NRG GNG NGR.

UniProt: [P57682](#)

Application Details

Application Notes: The stated application concentrations are suggested starting amounts. Titration of the KLF3 antibody may be required due to differences in protocols and secondary/substrate sensitivity.\. Western blot: 0.5-1 µg/mL

Restrictions: For Research Use only

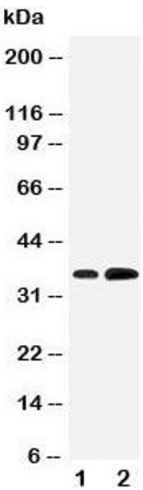
Handling

Buffer: 0.5 mg/mL if reconstituted with 0.2 mL sterile DI water

Storage: -20 °C

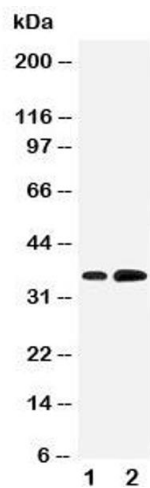
Storage Comment: After reconstitution, the KLF3 antibody can be stored for up to one month at 4°C. For long-term, aliquot and store at -20°C. Avoid repeated freezing and thawing.

Images



Western Blotting

Image 1. Western blot testing of KLF3 antibody and Lane 1: rat testis; 2: human HeLa cell lysate. Predicted size ~37KD



Western Blotting

Image 2. Western blot testing of KLF3 antibody and Lane 1: rat testis