

Datasheet for ABIN3031569

anti-KLF4 antibody

5 Images

[Go to Product page](#)

Overview

Quantity:	0.2 mL
Target:	KLF4
Reactivity:	Human
Host:	Mouse
Clonality:	Monoclonal
Conjugate:	This KLF4 antibody is un-conjugated
Application:	Western Blotting (WB), ELISA, Immunofluorescence (IF), Flow Cytometry (FACS)

Product Details

Immunogen:	Recombinant protein was used to produce this monoclonal KLF4 antibody.
Clone:	56CT5-1-6
Isotype:	IgG1
Purification:	Purified

Target Details

Target:	KLF4
Alternative Name:	KLF4 (KLF4 Products)
Background:	KLF4 is a transcription factor that can act both as activator and as repressor. Binds the 5'-CACCC-3' core sequence. Binds to the promoter region of its own gene and can activate its own transcription. Regulates the expression of key transcription factors during embryonic development. Plays an important role in maintaining embryonic stem cells, and in preventing

Target Details

their differentiation. Required for establishing the barrier function of the skin and for postnatal maturation and maintenance of the ocular surface. Involved in the differentiation of epithelial cells and may also function in skeletal and kidney development. Contributes to the down-regulation of p53/TP53 transcription. [UniProt]

UniProt: [O43474](#)

Pathways: [Peptide Hormone Metabolism](#), [Stem Cell Maintenance](#)

Application Details

Application Notes: Titration of the KLF4 antibody may be required due to differences in protocols and secondary/substrate sensitivity.\. Western blot: 1:2000,Flow Cytometry: 1:10-1:50,Immunofluorescence: 1:10-1:50

Restrictions: For Research Use only

Handling

Format: Liquid

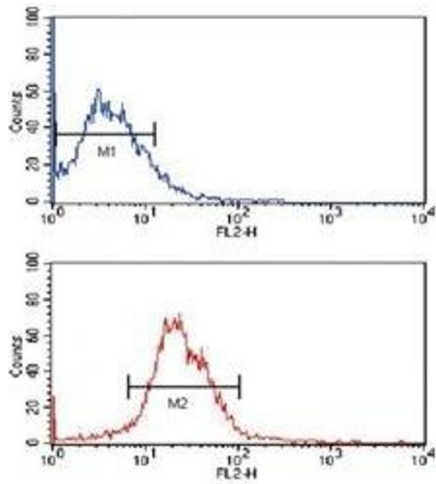
Buffer: In 1X PBS, pH 7.4, with 0.09 % sodium azide

Preservative: Sodium azide

Precaution of Use: This product contains Sodium azide: a POISONOUS AND HAZARDOUS SUBSTANCE which should be handled by trained staff only.

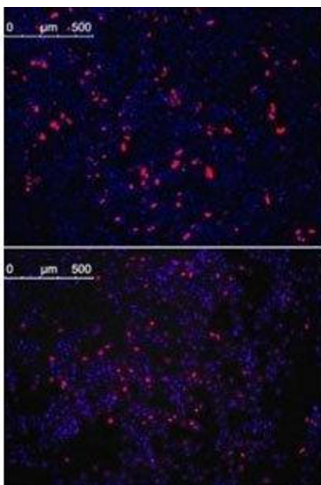
Storage: -20 °C

Storage Comment: Aliquot the KLF4 antibody and store frozen at -20°C or colder. Avoid repeated freeze-thaw cycles.



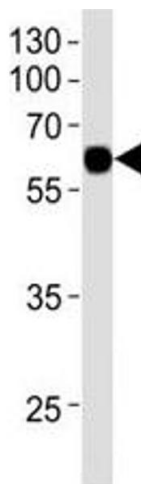
Flow Cytometry

Image 1. Flow cytometric analysis of MCF-7 cells using KLF4 antibody (bottom histogram) compared to a negative control (top histogram). PE-conjugated goat-anti-mouse secondary Ab was used for the analysis.



Immunofluorescence

Image 2. Immunofluorescence analysis with KLF4 antibody. HeLa cells transfected with pMX constructs of human KLF4 (top) and NIH3T3 cells transfected with pMX constructs of mouse KLF4 (bottom) were analyzed at approximately 62 hours after transfection.



Western Blotting

Image 3. Western blot analysis of recombinant protein using KLF4 antibody at 1:1000.

Please check the [product details page](#) for more images. Overall 5 images are available for ABIN3031569.