

Datasheet for ABIN3031570
anti-KLF4 antibody (AA 394-421)[Go to Product page](#)

5 Images

Overview

Quantity:	0.4 mL
Target:	KLF4
Binding Specificity:	AA 394-421
Reactivity:	Human
Host:	Rabbit
Clonality:	Polyclonal
Conjugate:	This KLF4 antibody is un-conjugated
Application:	Western Blotting (WB), ELISA, Immunofluorescence (IF), Flow Cytometry (FACS)

Product Details

Immunogen:	A portion of amino acids 394-421 from the human protein was used as the immunogen for this KLF4 antibody.
Isotype:	Ig Fraction
Purification:	Purified

Target Details

Target:	KLF4
Alternative Name:	KLF4 (KLF4 Products)
Background:	KLF4 is a transcription factor which acts as both an activator and repressor. Binds the CACCC core sequence. Binds to multiple sites in the 5'-flanking region of its own gene and can activate its own transcription. Required for establishing the barrier function of the skin and for postnatal

Target Details

maturation and maintenance of the ocular surface. Involved in the differentiation of epithelial cells and may also function in skeletal and kidney development.

UniProt: [O43474](#)

Pathways: [Peptide Hormone Metabolism](#), [Stem Cell Maintenance](#)

Application Details

Application Notes: Titration of the KLF4 antibody may be required due to differences in protocols and secondary/substrate sensitivity.\. Western blot: 1:1000,Immunofluorescence: 1:10-1:50,Flow Cytometry: 1:10-1:50

Restrictions: For Research Use only

Handling

Format: Liquid

Buffer: In 1X PBS, pH 7.4, with 0.09 % sodium azide

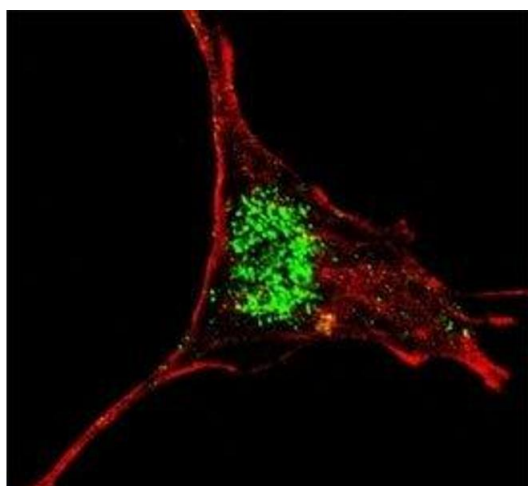
Preservative: Sodium azide

Precaution of Use: This product contains Sodium azide: a POISONOUS AND HAZARDOUS SUBSTANCE which should be handled by trained staff only.

Storage: -20 °C

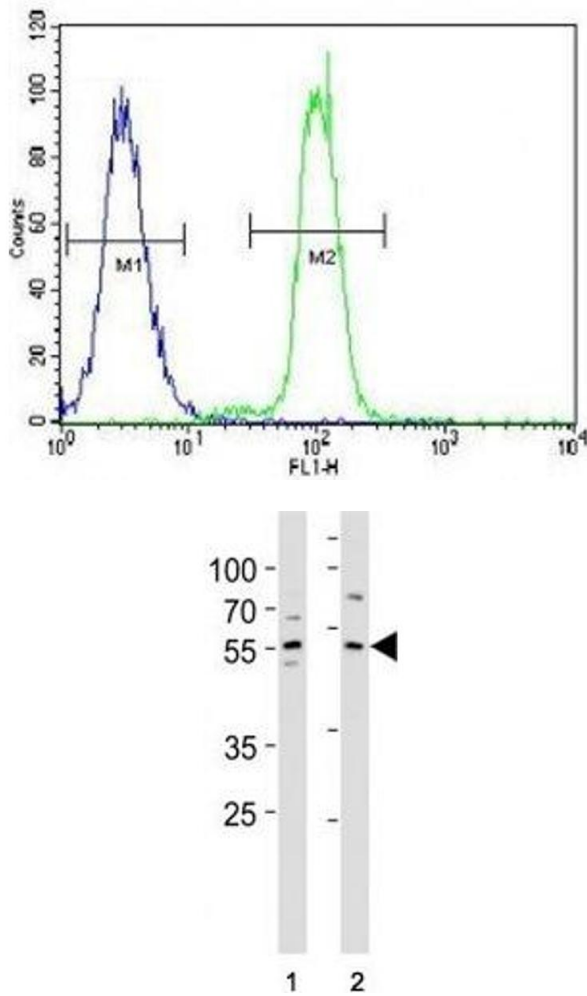
Storage Comment: Aliquot the KLF4 antibody and store frozen at -20°C or colder. Avoid repeated freeze-thaw cycles.

Images



Immunofluorescence

Image 1. Fluorescent confocal image of SY5Y cells stained with KLF4 antibody at 1:200. KLF4 immunoreactivity is localized very specifically to the nuclei of the SY5Y cells.



Flow Cytometry

Image 2. KLF4 antibody flow cytometric analysis of K562 cells (right histogram) compared to a negative control (left histogram). FITC-conjugated goat-anti-rabbit secondary Ab was used for the analysis.

Western Blotting

Image 3. KLF4 antibody western blot analysis in (1) A431 and (2) MCF-7 lysate. Predicted molecular weight: 50-60 kDa + ~75 kDa

Please check the [product details page](#) for more images. Overall 5 images are available for ABIN3031570.