



[Go to Product page](#)

Datasheet for ABIN3031572
anti-KLF4 antibody (AA 69-101)

9 Images

Overview

Quantity:	0.4 mL
Target:	KLF4
Binding Specificity:	AA 69-101
Reactivity:	Human, Mouse
Host:	Rabbit
Clonality:	Polyclonal
Conjugate:	This KLF4 antibody is un-conjugated
Application:	Western Blotting (WB), ELISA, Immunofluorescence (IF), Immunohistochemistry (IHC)

Product Details

Immunogen:	A portion of amino acids 69-101 from the human protein was used as the immunogen for this KLF4 antibody.
Isotype:	Ig Fraction
Purification:	Purified

Target Details

Target:	KLF4
Alternative Name:	KLF4 (KLF4 Products)
Background:	Transcription factor, can act both as activator and as repressor. Binds the 5'-CACCC-3' core sequence. Binds to the promoter region of its own gene and can activate its own transcription. Regulates the expression of key transcription factors during embryonic development. Plays an

Target Details

important role in maintaining embryonic stem cells, and in preventing their differentiation. Required for establishing the barrier function of the skin and for postnatal maturation and maintenance of the ocular surface. Involved in the differentiation of epithelial cells and may also function in skeletal and kidney development. Contributes to the down-regulation of p53/TP53 transcription.

UniProt: [O43474](#)

Pathways: [Peptide Hormone Metabolism](#), [Stem Cell Maintenance](#)

Application Details

Application Notes: The stated application concentrations are suggested starting amounts. Titration of the KLF4 antibody may be required due to differences in protocols and secondary/substrate sensitivity.\. Western blot: 1:1000, Immunofluorescence: 1:10-1:50, IHC (Paraffin): 1:10-1:50

Restrictions: For Research Use only

Handling

Format: Liquid

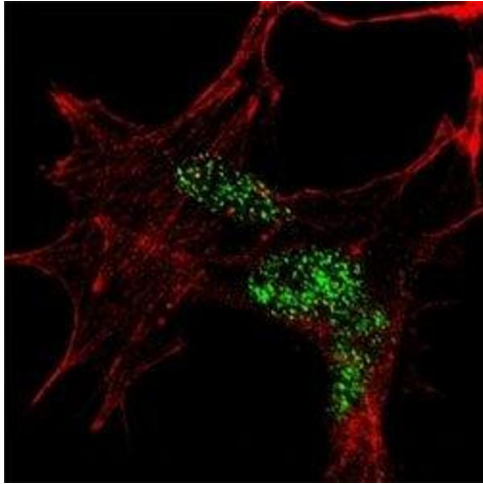
Buffer: In 1X PBS, pH 7.4, with 0.09 % sodium azide

Preservative: Sodium azide

Precaution of Use: This product contains Sodium azide: a POISONOUS AND HAZARDOUS SUBSTANCE which should be handled by trained staff only.

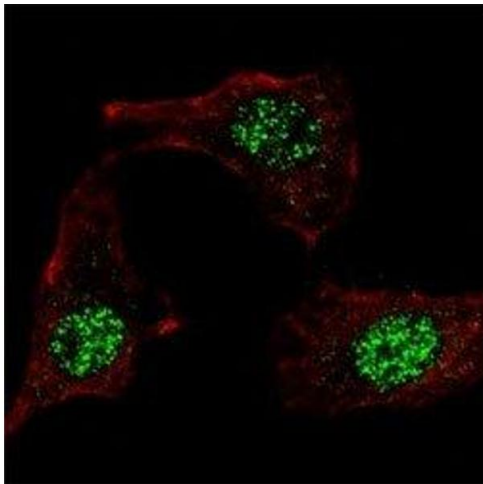
Storage: -20 °C

Storage Comment: Store at 4°C for up to one month. For long term, aliquot the KLF4 antibody and store frozen at -20°C or colder. Avoid repeated freeze-thaw cycles.



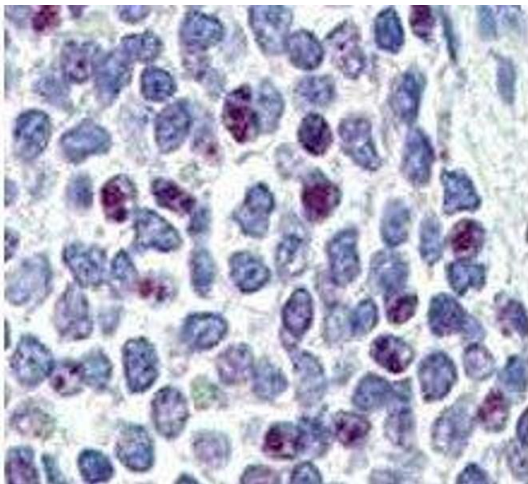
Immunofluorescence

Image 1. Fluorescent confocal image of SY5Y cells stained with KLF4 antibody at 1:100. KLF4 immunoreactivity is localized to the nuclei.



Immunofluorescence

Image 2. IF staining of HeLa cells with KLF4 antibody at 1:100, response is localized to the nuclei.



Immunohistochemistry

Image 3. IHC analysis of FFPE human spleen tissue stained with KLF4 antibody

Please check the [product details page](#) for more images. Overall 9 images are available for ABIN3031572.