



[Go to Product page](#)

Datasheet for ABIN3031578  
**anti-L1CAM antibody (AA 1154-1182)**

3 Images

### Overview

Quantity:	0.4 mL
Target:	L1CAM
Binding Specificity:	AA 1154-1182
Reactivity:	Human, Mouse
Host:	Rabbit
Clonality:	Polyclonal
Conjugate:	This L1CAM antibody is un-conjugated
Application:	Western Blotting (WB), ELISA

### Product Details

Immunogen:	A portion of amino acids 1154-1182 from the human protein was used as the immunogen for this L1CAM antibody.
Isotype:	Ig Fraction
Cross-Reactivity (Details):	Expected species reactivity: Rat
Purification:	Antigen affinity purified

### Target Details

Target:	L1CAM
Alternative Name:	L1CAM ( <a href="#">L1CAM Products</a> )
Background:	L1CAM is an axonal glycoprotein belonging to the immunoglobulin supergene family. The

## Target Details

---

ectodomain, consisting of several immunoglobulin-like domains and fibronectin-like repeats (type III), is linked via a single transmembrane sequence to a conserved cytoplasmic domain. This cell adhesion molecule plays an important role in nervous system development, including neuronal migration and differentiation. Mutations in the gene cause three X-linked neurological syndromes known by the acronym CRASH (corpus callosum hypoplasia, retardation, aphasia, spastic paraplegia and hydrocephalus). Alternative splicing of a neuron-specific exon is thought to be functionally relevant.

UniProt: [P32004](#)

Pathways: [Synaptic Membrane](#)

## Application Details

---

Application Notes: Titration of the L1CAM antibody may be required due to differences in protocols and secondary/substrate sensitivity.

1. Cleavage by ADAM10 results in 180 and 40 kDa bands while cleavage by Plasmin results in 140 and 80 kDa bands.\. Western blot: 1:1000 (1)

Restrictions: For Research Use only

## Handling

---

Format: Liquid

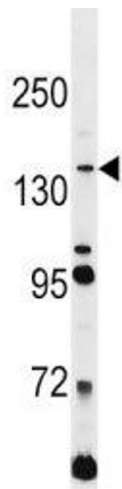
Buffer: In 1X PBS, pH 7.4, with 0.09 % sodium azide

Preservative: Sodium azide

Precaution of Use: This product contains Sodium azide: a POISONOUS AND HAZARDOUS SUBSTANCE which should be handled by trained staff only.

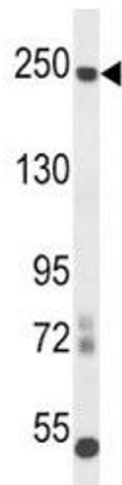
Storage: -20 °C

Storage Comment: Aliquot the L1CAM antibody and store frozen at -20°C or colder. Avoid repeated freeze-thaw cycles.



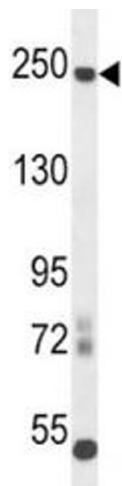
#### Western Blotting

**Image 1.** L1CAM antibody western blot analysis in Jurkat lysate. Expected molecular weight of unglycosylated protein is 140-150 kDa.



#### Western Blotting

**Image 2.** L1CAM antibody western blot analysis in mouse cerebellum tissue lysate. Expected molecular weight of glycosylated protein is 200-220 kDa.



#### Western Blotting

**Image 3.** L1CAM antibody western blot analysis in mouse cerebellum tissue lysate. Expected molecular weight of glycosylated protein is 200-220 kDa.