

Datasheet for ABIN3031581

anti-Lactate Dehydrogenase A antibody (AA 154-182)[Go to Product page](#)

5 Images

Overview

Quantity:	0.4 mL
Target:	Lactate Dehydrogenase A (LDHA)
Binding Specificity:	AA 154-182
Reactivity:	Human
Host:	Rabbit
Clonality:	Polyclonal
Conjugate:	This Lactate Dehydrogenase A antibody is un-conjugated
Application:	Western Blotting (WB), ELISA, Immunohistochemistry (IHC), Flow Cytometry (FACS)

Product Details

Immunogen:	A portion of amino acids 154-182 from the human protein was used as the immunogen for this LDHA antibody.
Isotype:	Ig Fraction
Cross-Reactivity (Details):	Expected species reactivity: Rat, Bovine, Pig, Primate
Purification:	Antigen affinity purified

Target Details

Target:	Lactate Dehydrogenase A (LDHA)
Alternative Name:	LDHA (LDHA Products)
Background:	LDHA catalyzes the conversion of L-lactate and NAD to pyruvate and NADH in the final step of

Target Details

anaerobic glycolysis. The protein is found predominantly in muscle tissue and belongs to the lactate dehydrogenase family. Mutations in this gene have been linked to exertional myoglobinuria.

UniProt: [P00338](#)

Pathways: [Warburg Effect](#)

Application Details

Application Notes: Titration of the LDHA antibody may be required due to differences in protocols and secondary/substrate sensitivity.\. Western blot: 1:1000,IHC (Paraffin): 1:50-1:100,Flow Cytometry: 1:10-1:50

Restrictions: For Research Use only

Handling

Format: Liquid

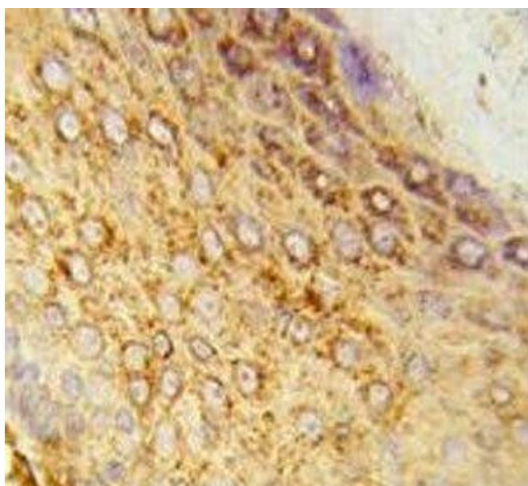
Buffer: In 1X PBS, pH 7.4, with 0.09 % sodium azide

Preservative: Sodium azide

Precaution of Use: This product contains Sodium azide: a POISONOUS AND HAZARDOUS SUBSTANCE which should be handled by trained staff only.

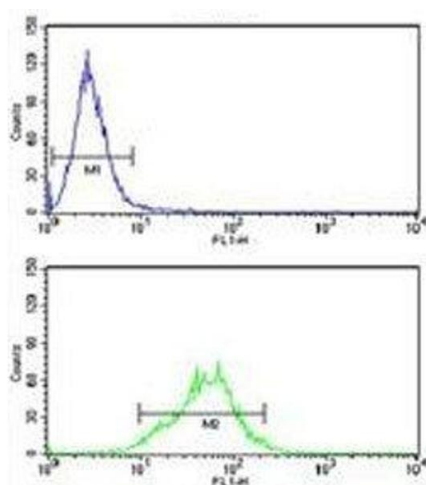
Storage: -20 °C

Storage Comment: Aliquot the LDHA antibody and store frozen at -20°C or colder. Avoid repeated freeze-thaw cycles.



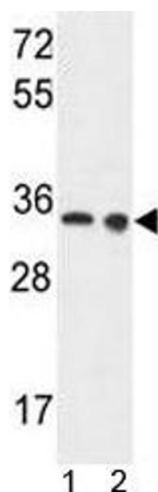
Immunohistochemistry

Image 1. IHC analysis of FFPE human skin tissue stained with LDHA antibody



Flow Cytometry

Image 2. LDHA antibody flow cytometry analysis of HeLa cells (green) compared to a negative control (blue). FITC-conjugated goat-anti-rabbit secondary Ab was used for the analysis.



Western Blotting

Image 3. LDHA antibody western blot analysis in 1) Ramos and 2) A375 lysate.

Please check the [product details page](#) for more images. Overall 5 images are available for ABIN3031581.