

Datasheet for ABIN3031585  
**anti-Lamin A/C antibody (AA 455-469)**[Go to Product page](#)

## 6 Images

## Overview

Quantity:	100 µg
Target:	Lamin A/C (LMNA)
Binding Specificity:	AA 455-469
Reactivity:	Human, Mouse, Rat
Host:	Rabbit
Clonality:	Polyclonal
Conjugate:	This Lamin A/C antibody is un-conjugated
Application:	Western Blotting (WB), Immunohistochemistry (Paraffin-embedded Sections) (IHC (p)), Immunocytochemistry (ICC)

## Product Details

Immunogen:	Amino acids 455-469 (RNKSNEDQSMGNWQI) were used as the immunogen for this Lamin A/C antibody (100% homologous in human, mouse and rat).
Isotype:	IgG
Purification:	Antigen affinity

## Target Details

Target:	Lamin A/C (LMNA)
Alternative Name:	Lamin A/C ( <a href="#">LMNA Products</a> )
Background:	Lamins are structural protein components of the nuclear lamina, a protein network underlying the inner nuclear membrane that determines nuclear shape and size. There are three types of

## Target Details

lamins, A, B and C. The Lamin A/C (LMNA) gene contains 12 exons. Alternative splicing within exon 10 gives rise to two different mRNAs that code for pre-lamin A and C. Lamin A/C mapped to 1q21.2-q21.3 and mutations in this gene cause a variety of human diseases including Emery-Dreifuss muscular dystrophy, dilated cardiomyopathy, and Hutchinson-Gilford progeria syndrome. Protein deficiency is thus associated with both defective nuclear mechanics and impaired mechanically activated gene transcription.

UniProt: [P02545](#)

Pathways: [Apoptosis](#), [Caspase Cascade in Apoptosis](#), [ER-Nucleus Signaling](#), [Protein targeting to Nucleus](#)

## Application Details

Application Notes: The stated application concentrations are suggested starting points. Titration of the Lamin A/C antibody may be required due to differences in protocols and secondary/substrate sensitivity.\. Western blot: 0.5-1 µg/mL, IHC (Paraffin): 0.5-1 µg/mL, Immunocytochemistry: 0.5-1 µg/mL

Restrictions: For Research Use only

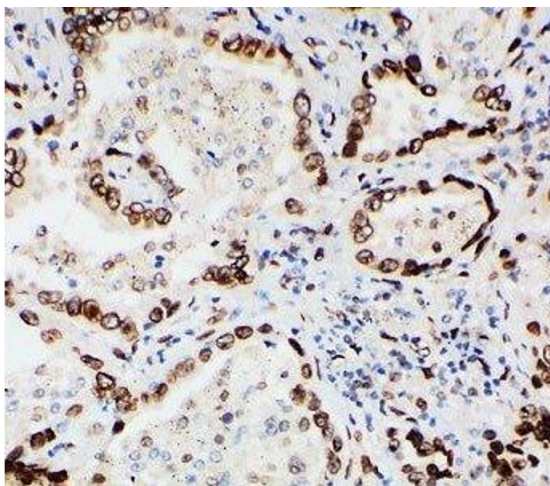
## Handling

Buffer: 0.5 mg/mL if reconstituted with 0.2 mL sterile DI water

Storage: -20 °C

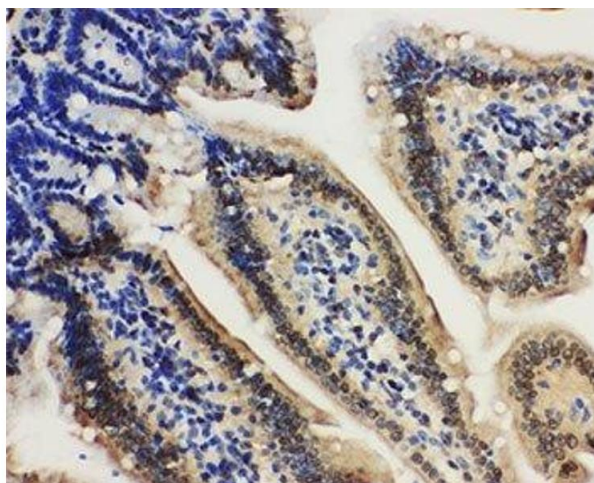
Storage Comment: After reconstitution, the Lamin A/C antibody can be stored for up to one month at 4°C. For long-term, aliquot and store at -20°C. Avoid repeated freezing and thawing.

## Images



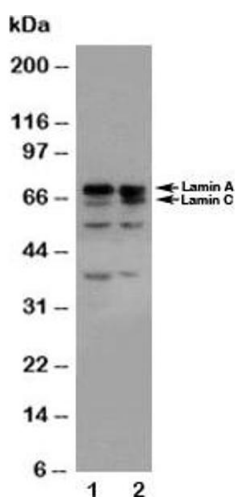
### Immunohistochemistry

**Image 1.** IHC-P: Lamin A/C antibody testing of human lung cancer tissue



#### Immunohistochemistry

**Image 2.** IHC-P: Lamin A/C antibody testing of mouse intestine tissue



#### Western Blotting

**Image 3.** Western blot testing of Lamin A/C antibody and  
Lane 1: HeLa; 2: A431 cell lysate

Please check the [product details page](#) for more images. Overall 6 images are available for ABIN3031585.