

Datasheet for ABIN3031586
anti-Lamin B1 antibody (AA 570-586)

6 Images

[Go to Product page](#)

Overview

Quantity:	100 µg
Target:	Lamin B1 (LMNB1)
Binding Specificity:	AA 570-586
Reactivity:	Human, Rat
Host:	Rabbit
Clonality:	Polyclonal
Conjugate:	This Lamin B1 antibody is un-conjugated
Application:	Western Blotting (WB), Immunohistochemistry (Paraffin-embedded Sections) (IHC (p)), Immunocytochemistry (ICC), Immunohistochemistry (Frozen Sections) (IHC (fro))

Product Details

Immunogen:	Amino acids 570-586 (FHQQGTPRASNRSCAIM-human) were used as the immunogen for this Lamin B1 antibody.
Isotype:	IgG
Purification:	Antigen affinity

Target Details

Target:	Lamin B1 (LMNB1)
Alternative Name:	Lamin B1 (LMNB1 Products)
Background:	Lamin B1 is a protein that in humans is encoded by the LMNB1 gene. The nuclear lamina consists of a two-dimensional matrix of proteins located next to the inner nuclear membrane.

Target Details

The lamin family of proteins make up the matrix and are highly conserved in evolution. During mitosis, the lamina matrix is reversibly disassembled as the lamin proteins are phosphorylated. They are thought to be involved in nuclear stability, chromatin structure and gene expression. Vertebrate lamins consist of two types, A and B. This gene encodes one of the two B type proteins, B1.

UniProt: [P20700](#)

Pathways: [Apoptosis](#), [Caspase Cascade in Apoptosis](#)

Application Details

Application Notes: The stated application concentrations are suggested starting points. Titration of the Lamin B1 antibody may be required due to differences in protocols and secondary/substrate sensitivity.\.

Western blot: 0.5-1 µg/mL, IHC (Paraffin): 0.5-1 µg/mL, IHC (Frozen): 0.5-1 µg/mL, Immunocytochemistry: 0.5-1 µg/mL

Restrictions: For Research Use only

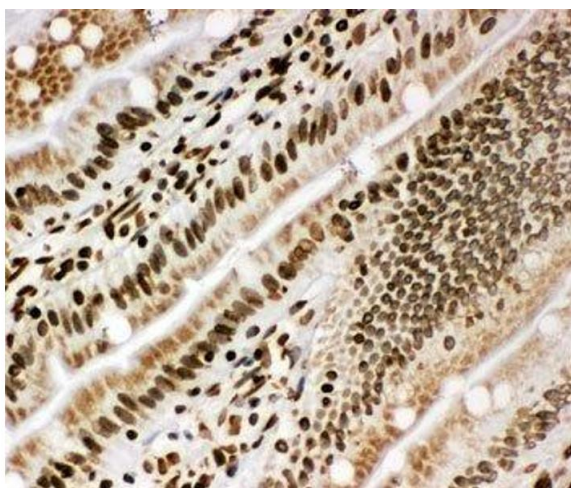
Handling

Buffer: 0.5 mg/mL if reconstituted with 0.2 mL sterile DI water

Storage: -20 °C

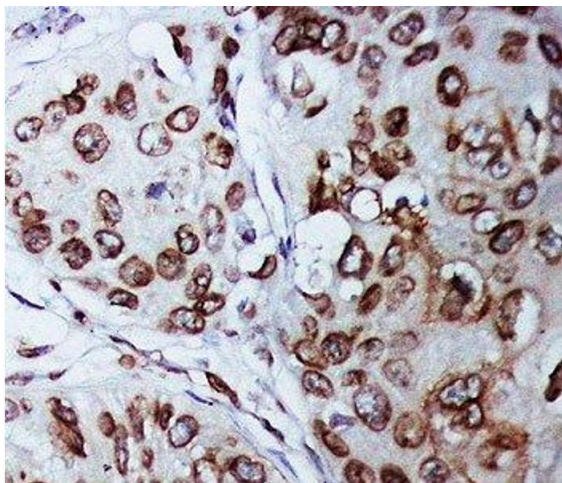
Storage Comment: After reconstitution, the Lamin B1 antibody can be stored for up to one month at 4°C. For long-term, aliquot and store at -20°C. Avoid repeated freezing and thawing.

Images



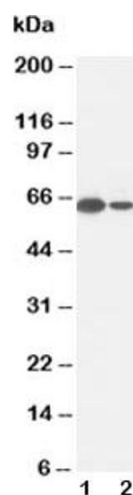
Immunohistochemistry

Image 1. IHC-F testing of rat intestine tissue



Immunohistochemistry

Image 2. IHC-P: Lamin B1 antibody testing of human breast cancer tissue



Western Blotting

Image 3. Western blot testing of Lamin B1 antibody and
Lane 1: MCF-7; 2: HeLa cell lysate

Please check the [product details page](#) for more images. Overall 6 images are available for ABIN3031586.