

Datasheet for ABIN3031588
anti-Lamin B2 antibody (AA 580-597)[Go to Product page](#)

3 Images

Overview

Quantity:	100 µg
Target:	Lamin B2 (LMNB2)
Binding Specificity:	AA 580-597
Reactivity:	Human, Mouse, Rat
Host:	Rabbit
Clonality:	Polyclonal
Conjugate:	This Lamin B2 antibody is un-conjugated
Application:	Western Blotting (WB), Immunohistochemistry (Paraffin-embedded Sections) (IHC (p)), Immunohistochemistry (Frozen Sections) (IHC (fro))

Product Details

Immunogen:	Amino acids 580-597 (EEDLFHQGGDPRTTSRGC) were used as the immunogen for this Lamin B2 antibody (100% homologous in human, mouse and rat).
Isotype:	IgG
Purification:	Antigen affinity

Target Details

Target:	Lamin B2 (LMNB2)
Alternative Name:	Lamin B2 (LMNB2 Products)
Background:	Lamin B2, also called LMNB2, is a protein associated with laminopathies. The LMNB2 gene is mapped to the G-negative subtelomeric band p13.3 of chromosome 19 by in situ hybridization.

Target Details

Model organisms have been used in the study of Lamin B2 function. A conditional knockout mouse line, called Lmnb2, was generated as part of the International Knockout Mouse Consortium program-a high-throughput mutagenesis project to generate and distribute animal models of disease to interested scientists. A highly sensitive procedure about mapping the start site of DNA replication in a 13.7-kb region of human chromosome 19 coding for lamin B2 is developed for the identification of the origin of bidirectional DNA synthesis in single-copy replicons of mammalian cells.

UniProt: [Q03252](#)

Pathways: [Apoptosis](#), [Caspase Cascade in Apoptosis](#)

Application Details

Application Notes: Titration of the Lamin B2 antibody may be required due to differences in protocols and secondary/substrate sensitivity.\. Western blot: 0.5-1 µg/mL,IHC (Paraffin): 0.5-1 µg/mL,IHC (Frozen): 0.5-1 µg/mL

Restrictions: For Research Use only

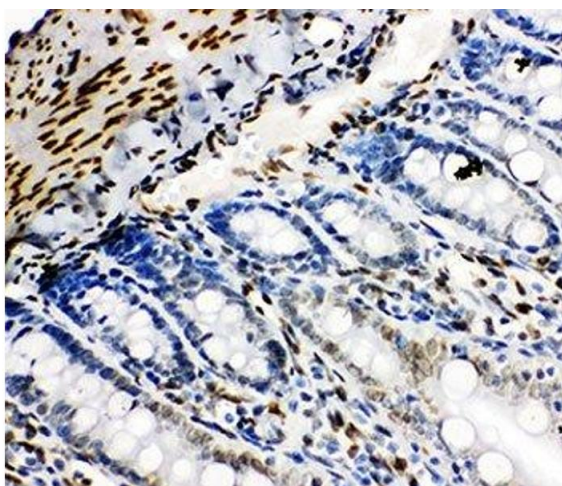
Handling

Buffer: 0.5 mg/mL if reconstituted with 0.2 mL sterile DI water

Storage: -20 °C

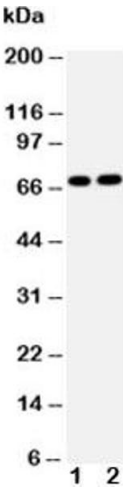
Storage Comment: The lyophilized Lamin B2 antibody can be stored at 4°C. After reconstitution, aliquot and store at -20°C. Avoid repeated freezing and thawing.

Images



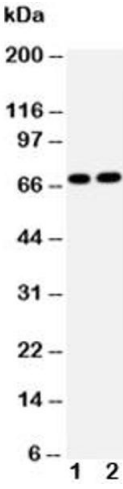
Immunohistochemistry

Image 1. IHC-P: Lamin B2 antibody testing of rat intestine tissue



Western Blotting

Image 2. Western blot testing of Lamin B2 antibody and
Lane 1: HeLa; 2: U87 cell lysate



Western Blotting

Image 3. Western blot testing of Lamin B2 antibody and
Lane 1: HeLa