

Datasheet for ABIN3031591

**anti-Laminin gamma 1 antibody (AA 1566-1579)****3** Images[Go to Product page](#)

## Overview

Quantity:	100 µg
Target:	Laminin gamma 1 (LAMC1)
Binding Specificity:	AA 1566-1579
Reactivity:	Human, Mouse, Rat
Host:	Rabbit
Clonality:	Polyclonal
Conjugate:	This Laminin gamma 1 antibody is un-conjugated
Application:	Western Blotting (WB), Immunohistochemistry (Paraffin-embedded Sections) (IHC (p))

## Product Details

Immunogen:	Amino acids 1566-1579 (KKQEAAIMDYNRDI-human) were used as the immunogen for this Laminin gamma 1 antibody.
Isotype:	IgG
Purification:	Antigen affinity

## Target Details

Target:	Laminin gamma 1 (LAMC1)
Alternative Name:	Laminin gamma 1 ( <a href="#">LAMC1 Products</a> )
Background:	Laminin subunit gamma-1 is a protein that in humans is encoded by the LAMC1 gene. Laminins, a family of extracellular matrix glycoproteins, are the major noncollagenous constituent of basement membranes. They have been implicated in a wide variety of biological

## Target Details

---

processes including cell adhesion, differentiation, migration, signaling, neurite outgrowth and metastasis. Laminins are composed of 3 non identical chains: laminin alpha, beta and gamma (formerly A, B1, and B2, respectively) and they form a cruciform structure consisting of 3 short arms, each formed by a different chain, and a long arm composed of all 3 chains. Each laminin chain is a multidomain protein encoded by a distinct gene. Several isoforms of each chain have been described. Different alpha, beta and gamma chain isomers combine to give rise to different heterotrimeric laminin isoforms which are designated by Arabic numerals in the order of their discovery. The biological functions of the different chains and trimer molecules are largely unknown, but some have been shown to differ with respect to their tissue distribution, presumably reflecting diverse functions in vivo. This gene encodes the gamma chain isoform. The gamma 1 chain, formerly though to be a beta chain, contains structural domains similar to beta chains, however, lacks the short alpha region separating domains I and II. The structural organization of this gene also suggested that it had diverged considerably from the beta chain genes.

---

UniProt: [P11047](#)

## Application Details

---

Application Notes: The stated application concentrations are suggested starting points. Titration of the Laminin gamma 1 antibody may be required due to differences in protocols and secondary/substrate sensitivity.\. Western blot: 0.5-1 µg/mL,IHC (Paraffin): 0.5-1 µg/mL

---

Restrictions: For Research Use only

## Handling

---

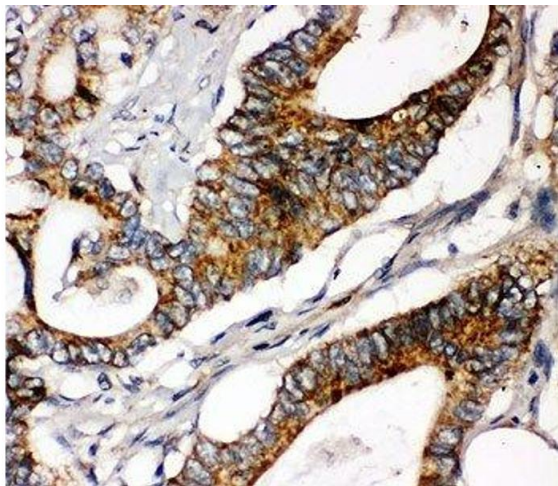
Buffer: 0.5 mg/mL if reconstituted with 0.2 mL sterile DI water

---

Storage: -20 °C

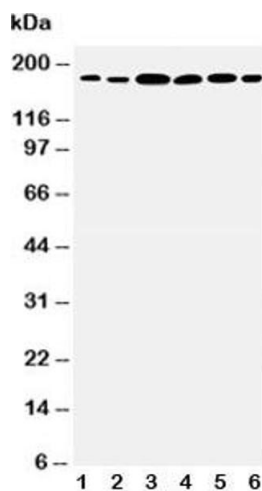
---

Storage Comment: After reconstitution, the Laminin gamma 1 antibody can be stored for up to one month at 4°C. For long-term, aliquot and store at -20°C. Avoid repeated freezing and thawing.



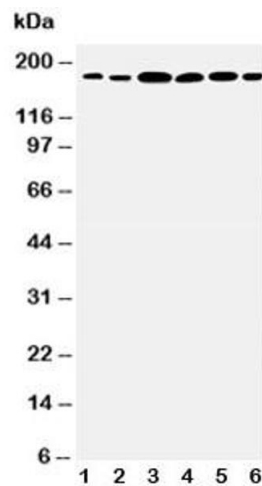
#### Immunohistochemistry

**Image 1.** IHC-P: Laminin gamma 1 antibody testing of human intestinal cancer tissue



#### Western Blotting

**Image 2.** Western blot testing of Laminin gamma 1 antibody and Lane 1: rat kidney; 2: rat lung; 3: U87; 4: SMMC-7721; 5: HeLa; 6: SKOV3 cell lysate



#### Western Blotting

**Image 3.** Western blot testing of Laminin gamma 1 antibody and Lane 1: rat kidney