

Datasheet for ABIN3031595
anti-LATS2 antibody (AA 228-258)[Go to Product page](#)

3 Images

Overview

Quantity:	0.4 mL
Target:	LATS2
Binding Specificity:	AA 228-258
Reactivity:	Human, Mouse
Host:	Rabbit
Clonality:	Polyclonal
Conjugate:	This LATS2 antibody is un-conjugated
Application:	ELISA, Western Blotting (WB), Immunohistochemistry (IHC)

Product Details

Immunogen:	A portion of amino acids 228-258 from the human protein was used as the immunogen for this LATS2 antibody.
Isotype:	Ig Fraction
Purification:	Purified

Target Details

Target:	LATS2
Alternative Name:	LATS2 (LATS2 Products)
Background:	LATS2 is a serine/threonine protein kinase belonging to the LATS tumor suppressor family. This protein localizes to centrosomes during interphase, and early and late metaphase. It interacts with the centrosomal proteins aurora-A and ajuba and is required for accumulation of

Target Details

gamma-tubulin and spindle formation at the onset of mitosis. It also interacts with a negative regulator of p53 and may function in a positive feedback loop with p53 that responds to cytoskeleton damage. Additionally, it can function as a co-repressor of androgen-responsive gene expression.

UniProt: [Q9NRM7](#)

Application Details

Application Notes: Titration of the LATS2 antibody may be required due to differences in protocols and secondary/substrate sensitivity.\. Western blot: 1:1000,IHC (Paraffin): 1:10-1:50

Restrictions: For Research Use only

Handling

Format: Liquid

Buffer: In 1X PBS pH 7.4 with 0.09 % sodium azide

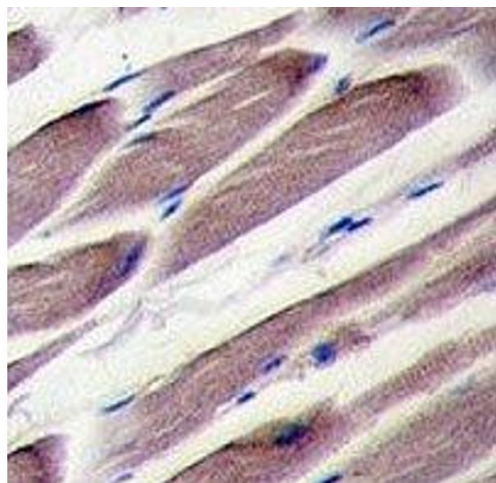
Preservative: Sodium azide

Precaution of Use: This product contains Sodium azide: a POISONOUS AND HAZARDOUS SUBSTANCE which should be handled by trained staff only.

Storage: -20 °C

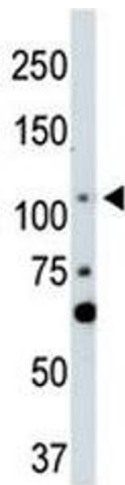
Storage Comment: Aliquot the LATS2 antibody and store frozen at -20°C or colder. Avoid repeated freeze-thaw cycles.

Images



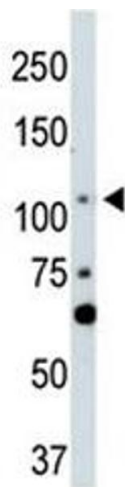
Immunohistochemistry

Image 1. IHC analysis of FFPE human skeletal muscle tissue stained with LATS2 antibody



Western Blotting

Image 2. LATS2 antibody used in western blot to detect LATS2 in NIH3T3 cell lysate



Western Blotting

Image 3. LATS2 antibody used in western blot to detect LATS2 in NIH3T3 cell lysate