

Datasheet for ABIN3031603

anti-Leptin Receptor antibody (AA 23-52)

5 Images

[Go to Product page](#)

Overview

| | |
|----------------------|---|
| Quantity: | 0.4 mL |
| Target: | Leptin Receptor (LEPR) |
| Binding Specificity: | AA 23-52 |
| Reactivity: | Human |
| Host: | Rabbit |
| Clonality: | Polyclonal |
| Conjugate: | This Leptin Receptor antibody is un-conjugated |
| Application: | Western Blotting (WB), ELISA, Immunohistochemistry (IHC), Flow Cytometry (FACS) |

Product Details

| | |
|---------------|--|
| Immunogen: | A portion of amino acids 23-52 from the human protein was used as the immunogen for this Leptin Receptor antibody. |
| Isotype: | Ig Fraction |
| Purification: | Purified |

Target Details

| | |
|-------------------|---|
| Target: | Leptin Receptor (LEPR) |
| Alternative Name: | Leptin Receptor (LEPR Products) |
| Background: | Leptin, an adipocyte-specific hormone, regulates adipose-tissue mass through hypothalamic effects on satiety and energy expenditure by acting through the leptin receptor (LEPR). LEPR is a single-transmembrane-domain receptor of the cytokine receptor family that is identical to the |

Target Details

mouse diabetes (db) gene product. During weight loss, leptin levels decrease, whereas soluble LEPR levels and the receptor bound fraction of leptin increases. The presence of LEPR in the absorptive cells of the small intestine suggests that leptin may have a physiological role in the regulation of nutrient absorption.

UniProt: [P48357](#)

Pathways: [JAK-STAT Signaling](#), [AMPK Signaling](#), [Feeding Behaviour](#)

Application Details

Application Notes: Titration of the Leptin Receptor antibody may be required due to differences in protocols and secondary/substrate sensitivity.\. Western blot: 1:1000,Flow Cytometry: 1:10-1:50,IHC (Paraffin): 1:50-1:100

Restrictions: For Research Use only

Handling

Format: Liquid

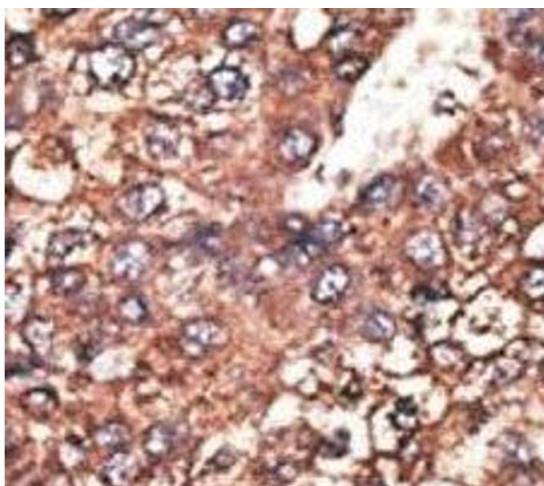
Buffer: In 1X PBS, pH 7.4, with 0.09 % sodium azide

Preservative: Sodium azide

Precaution of Use: This product contains Sodium azide: a POISONOUS AND HAZARDOUS SUBSTANCE which should be handled by trained staff only.

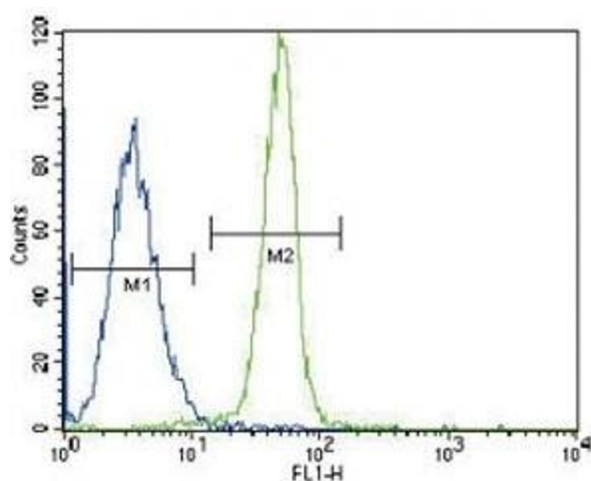
Storage: -20 °C

Storage Comment: Aliquot the Leptin Receptor antibody and store frozen at -20°C or colder. Avoid repeated freeze-thaw cycles.



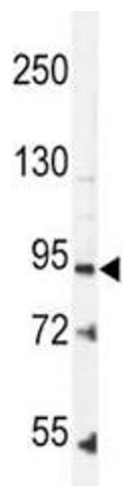
Immunohistochemistry

Image 1. IHC analysis of FFPE human hepatocarcinoma tissue stained with the Leptin Receptor antibody



Flow Cytometry

Image 2. Leptin Receptor antibody flow cytometric analysis of K562 cells (green) compared to a negative control (blue). FITC-conjugated goat-anti-rabbit secondary Ab was used for the analysis.



Western Blotting

Image 3. Leptin Receptor antibody western blot analysis in K562 lysate.

Please check the [product details page](#) for more images. Overall 5 images are available for ABIN3031603.