



[Go to Product page](#)

Datasheet for ABIN3031605
anti-LGR5 antibody (AA 605-638)

3 Images

Overview

Quantity:	0.4 mL
Target:	LGR5
Binding Specificity:	AA 605-638
Reactivity:	Human
Host:	Rabbit
Clonality:	Polyclonal
Conjugate:	This LGR5 antibody is un-conjugated
Application:	Western Blotting (WB), Immunohistochemistry (IHC), ELISA

Product Details

Immunogen:	A portion of amino acids 605-638 from the human protein was used as the immunogen for this anti-LGR5 antibody.
Isotype:	Ig Fraction
Purification:	Purified

Target Details

Target:	LGR5
Alternative Name:	LGR5 (LGR5 Products)
Background:	LGR5/GPR49 is a receptor for R-spondins that potentiates the canonical Wnt signaling pathway and acts as a stem cell marker of the intestinal epithelium and the hair follicle. Upon binding to R-spondins (RSPO1, RSPO2, RSPO3 or RSPO4), associates with phosphorylated LRP6 and

Target Details

frizzled receptors that are activated by extracellular Wnt receptors, triggering the canonical Wnt signaling pathway to increase expression of target genes. In contrast to classical G-protein coupled receptors, does not activate heterotrimeric G-proteins to transduce the signal. Involved in the development and/or maintenance of the adult intestinal stem cells during postembryonic development. [UniProt]

UniProt: [O75473](#)

Pathways: [WNT Signaling](#)

Application Details

Application Notes: Titration of the anti-LGR5 antibody may be required due to differences in protocols and secondary/substrate sensitivity.\. IHC (Paraffin): 1:10-1:50,Western blot: 1:1000

Restrictions: For Research Use only

Handling

Format: Liquid

Buffer: In 1X PBS pH 7.4 with 0.09 % sodium azide

Preservative: Sodium azide

Precaution of Use: This product contains Sodium azide: a POISONOUS AND HAZARDOUS SUBSTANCE which should be handled by trained staff only.

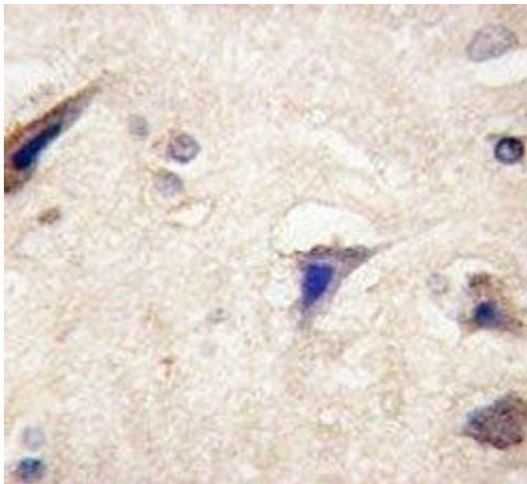
Storage: -20 °C

Storage Comment: Aliquot the anti-LGR5 antibody and store frozen at -20°C or colder. Avoid repeated freeze-thaw cycles.



Western Blotting

Image 1. Anti-LGR5 antibody western blot analysis in HL-60 lysate



Immunohistochemistry

Image 2. IHC analysis of FFPE human brain tissue stained with anti-LGR5 antibody



Western Blotting

Image 3. Anti-LGR5 antibody western blot analysis in HL-60 lysate