

Datasheet for ABIN3031608
anti-LRRK2 antibody (C-Term)[Go to Product page](#)

2 Images

Overview

Quantity:	0.4 mL
Target:	LRRK2
Binding Specificity:	C-Term
Reactivity:	Human
Host:	Rabbit
Clonality:	Polyclonal
Conjugate:	This LRRK2 antibody is un-conjugated
Application:	Western Blotting (WB), ELISA

Product Details

Immunogen:	This LRRK2 antibody was produced from a rabbit immunized with a KLH conjugated synthetic peptide between 2171-2207 amino acids from the C-terminal region of human LRRK2.
Isotype:	Ig Fraction
Purification:	Antigen affinity purified

Target Details

Target:	LRRK2
Alternative Name:	LRRK2 (LRRK2 Products)
Background:	Positively regulates autophagy through a calcium- dependent activation of the CaMKK/AMPK signaling pathway. The process involves activation of nicotinic acid adenine dinucleotide phosphate (NAADP) receptors, increase in lysosomal pH , and calcium release from lysosomes.

Target Details

Together with RAB29, plays a role in the retrograde trafficking pathway for recycling proteins, such as mannose 6 phosphate receptor (M6PR), between lysosomes and the Golgi apparatus in a retromer-dependent manner. Regulates neuronal process morphology in the intact central nervous system (CNS). Phosphorylates PRDX3. May also have GTPase activity. May play a role in the phosphorylation of proteins central to Parkinson disease.

UniProt: [Q5S007](#)

Pathways: [Regulation of G-Protein Coupled Receptor Protein Signaling, Skeletal Muscle Fiber Development](#)

Application Details

Application Notes: Titration of the LRRK2 antibody may be required due to differences in protocols and secondary/substrate sensitivity.\. Western blot: 1:1000

Restrictions: For Research Use only

Handling

Format: Liquid

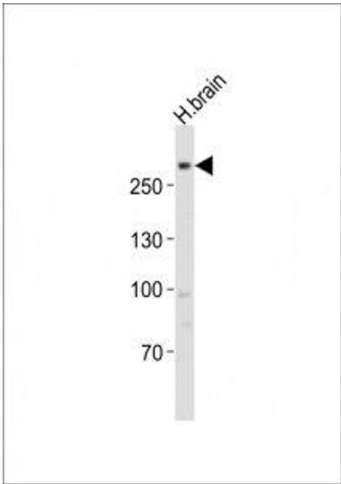
Buffer: In 1X PBS, pH 7.4, with 0.09 % sodium azide

Preservative: Sodium azide

Precaution of Use: This product contains Sodium azide: a POISONOUS AND HAZARDOUS SUBSTANCE which should be handled by trained staff only.

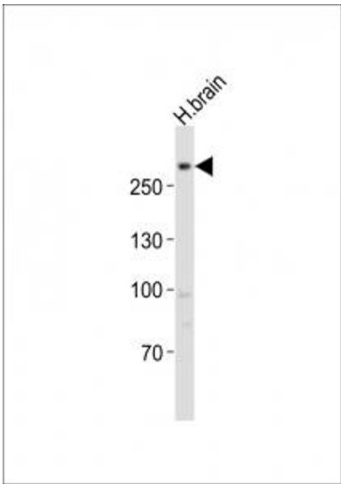
Storage: -20 °C

Storage Comment: Aliquot the LRRK2 antibody and store frozen at -20°C or colder. Avoid repeated freeze-thaw cycles.



Western Blotting

Image 1. Western blot testing of LRRK2 antibody at 1:1000 dilution + human brain lysate



Western Blotting

Image 2. Western blot testing of LRRK2 antibody at 1:1000 dilution + human brain lysate