

Datasheet for ABIN3031614  
**anti-LIF antibody (AA 72-101)**

## 6 Images

[Go to Product page](#)

## Overview

Quantity:	0.4 mL
Target:	LIF
Binding Specificity:	AA 72-101
Reactivity:	Human
Host:	Rabbit
Clonality:	Polyclonal
Conjugate:	This LIF antibody is un-conjugated
Application:	Western Blotting (WB), Immunohistochemistry (IHC), ELISA, Flow Cytometry (FACS)

## Product Details

Immunogen:	A portion of amino acids 72-101 from the human protein was used as the immunogen for this LIF antibody.
Isotype:	Ig Fraction
Purification:	Antigen affinity purified

## Target Details

Target:	LIF
Alternative Name:	LIF ( <a href="#">LIF Products</a> )
Background:	LIF is a pleiotropic cytokine with roles in several different systems. It is involved in the induction of hematopoietic differentiation in normal and myeloid leukemia cells, induction of neuronal cell differentiation, regulator of mesenchymal to epithelial conversion during kidney development,

## Target Details

and may also have a role in immune tolerance at the maternal-fetal interface.

UniProt:	<a href="#">P15018</a>
Pathways:	<a href="#">JAK-STAT Signaling</a> , <a href="#">Positive Regulation of Peptide Hormone Secretion</a> , <a href="#">Negative Regulation of Hormone Secretion</a> , <a href="#">Stem Cell Maintenance</a> , <a href="#">Growth Factor Binding</a>

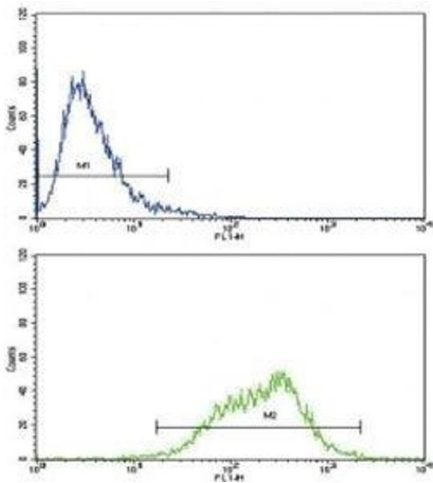
## Application Details

Application Notes:	Titration of the LIF antibody may be required due to differences in protocols and secondary/substrate sensitivity.\. Western blot: 1:1000,IHC (Paraffin): 1:10-1:50,Flow Cytometry: 1:10-1:50
Restrictions:	For Research Use only

## Handling

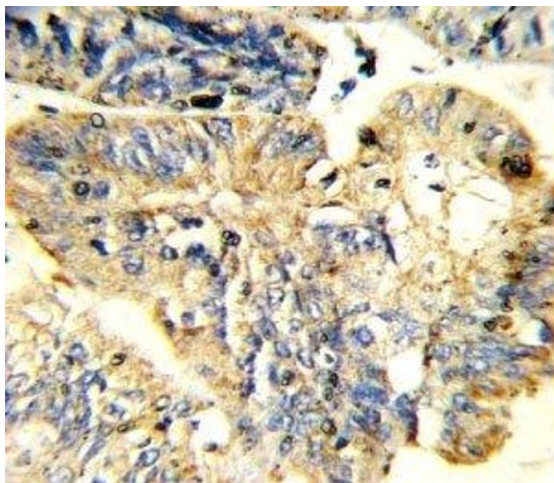
Format:	Liquid
Buffer:	In 1X PBS, pH 7.4, with 0.09 % sodium azide
Preservative:	Sodium azide
Precaution of Use:	This product contains Sodium azide: a POISONOUS AND HAZARDOUS SUBSTANCE which should be handled by trained staff only.
Storage:	-20 °C
Storage Comment:	Aliquot the LIF antibody and store frozen at -20°C or colder. Avoid repeated freeze-thaw cycles.

## Images



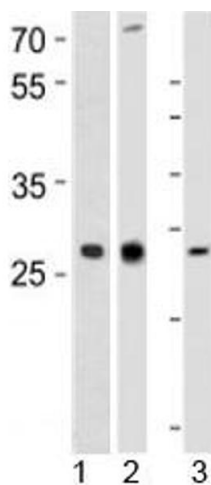
### Flow Cytometry

**Image 1.** Flow cytometric analysis of CEM cells using LIF antibody (green) compared to a negative control (blue). FITC-conjugated goat-anti-rabbit secondary Ab was used for the analysis.



#### Immunohistochemistry

**Image 2.** IHC analysis of FFPE human colon carcinoma stained with LIF antibody



#### Western Blotting

**Image 3.** Western blot analysis of 1) human CEM, 2) rat PC-12, and 3) mouse spleen tissue lysate using LIF antibody at 1:1000.

Please check the [product details page](#) for more images. Overall 6 images are available for ABIN3031614.