



[Go to Product page](#)

Datasheet for ABIN3031618

## anti-LI Cadherin antibody (AA 686-699)

### 2 Images

#### Overview

Quantity:	100 µg
Target:	LI Cadherin
Binding Specificity:	AA 686-699
Reactivity:	Human
Host:	Rabbit
Clonality:	Polyclonal
Conjugate:	This LI Cadherin antibody is un-conjugated
Application:	Western Blotting (WB)

#### Product Details

Immunogen:	Amino acids 686-699 (LIFEATDDDQHLFR-human) were used as the immunogen for this Cadherin 17 antibody.
Isotype:	IgG
Purification:	Antigen affinity

#### Target Details

Target:	LI Cadherin
Alternative Name:	Cadherin 17 ( <a href="#">LI Cadherin Products</a> )
Background:	Cadherin 17, also known as HPT1 or CDH16 is a protein that in humans is encoded by the CDH17 gene. By somatic cell hybrid analysis and fluorescence in situ hybridization, CDH17 gene is mapped to 8q22.1. This gene is a member of the cadherin superfamily, genes encoding

## Target Details

calcium-dependent, membrane-associated glycoproteins. The encoded protein is cadherin-like, consisting of an extracellular region, containing 7 cadherin domains, and a transmembrane region but lacking the conserved cytoplasmic domain. The protein is a component of the gastrointestinal tract and pancreatic ducts, acting as an intestinal proton-dependent peptide transporter in the first step in oral absorption of many medically important peptide-based drugs. The protein may also play a role in the morphological organization of liver and intestine.

UniProt: [Q12864](#)

## Application Details

Application Notes: The stated application concentrations are suggested starting points. Titration of the Cadherin 17 antibody may be required due to differences in protocols and secondary/substrate sensitivity.\. Western blot: 0.5-1 µg/mL

Restrictions: For Research Use only

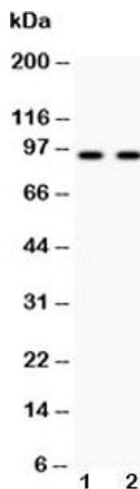
## Handling

Buffer: 0.5 mg/mL if reconstituted with 0.2 mL sterile DI water

Storage: -20 °C

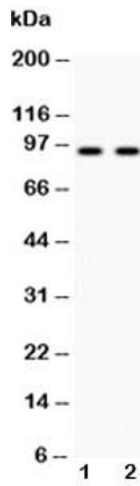
Storage Comment: After reconstitution, the Cadherin 17 antibody can be stored for up to one month at 4°C. For long-term, aliquot and store at -20°C. Avoid repeated freezing and thawing.

## Images



### Western Blotting

**Image 1.** Western blot testing of Cadherin 17 antibody and  
Lane 1: HeLa; 2: SW620 lysate



### Western Blotting

**Image 2.** Western blot testing of Cadherin 17 antibody and  
Lane 1: HeLa