



[Go to Product page](#)

Datasheet for ABIN3031619  
**anti-LASP1 antibody (AA 16-30)**

5 Images

### Overview

Quantity:	100 µg
Target:	LASP1
Binding Specificity:	AA 16-30
Reactivity:	Human, Mouse, Rat
Host:	Rabbit
Clonality:	Polyclonal
Conjugate:	This LASP1 antibody is un-conjugated
Application:	Western Blotting (WB), Immunohistochemistry (Paraffin-embedded Sections) (IHC (p)), Immunocytochemistry (ICC)

### Product Details

Immunogen:	Amino acids 16-30 (EKVNCLDKFWHKACF-human) were used as the immunogen for this LASP1 antibody (100% rat homology).
Isotype:	IgG
Purification:	Antigen affinity

### Target Details

Target:	LASP1
Alternative Name:	LASP1 ( <a href="#">LASP1 Products</a> )
Background:	LIM and SH3 domain protein 1 is a protein that in humans is encoded by the LASP1 gene. This gene encodes a member of a LIM protein subfamily which is characterized by a LIM motif and

## Target Details

---

a domain of Src homology region 3. This protein functions as an actin-binding protein and possibly in cytoskeletal organization. LASP1 has been shown to interact with Zyxin. Northern blot analysis revealed that LASP1 mRNA was expressed at a basal level in all normal tissues examined and overexpressed in 8 % of primary breast cancers. In most of these cancers, LASP1 and ERBB2 were simultaneously overexpressed.

UniProt: [Q14847](#)

## Application Details

---

Application Notes: The stated application concentrations are suggested starting amounts. Titration of the LASP1 antibody may be required due to differences in protocols and secondary/substrate sensitivity.\. Western blot: 0.5-1 µg/mL,IHC (Paraffin): 0.5-1 µg/mL,Immunocytochemistry: 0.5-1 µg/mL

Restrictions: For Research Use only

## Handling

---

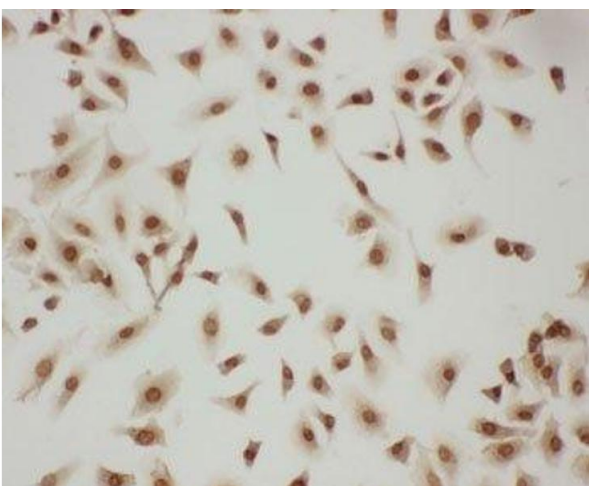
Buffer: 0.5 mg/mL if reconstituted with 0.2 mL sterile DI water

Storage: -20 °C

Storage Comment: After reconstitution, the LASP1 antibody can be stored for up to one month at 4°C. For long-term, aliquot and store at -20°C. Avoid repeated freezing and thawing.

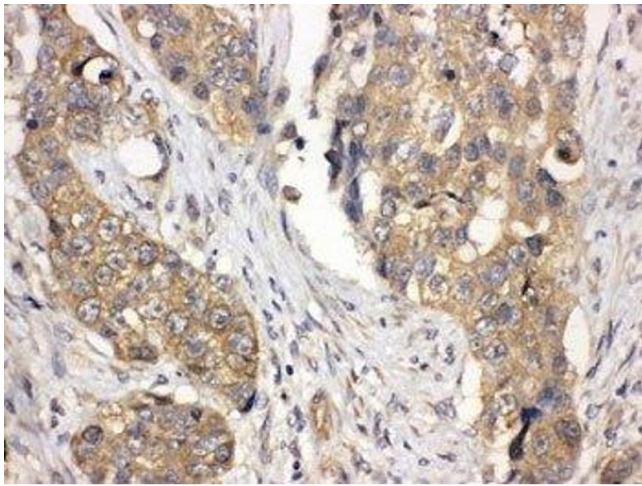
## Images

---



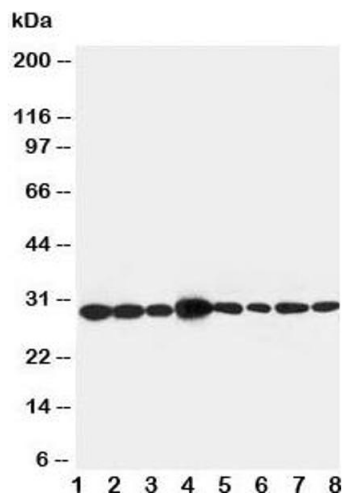
### Immunocytochemistry

**Image 1.** ICC testing of LASP1 antibody and A549 cells



### Immunohistochemistry

**Image 2.** IHC-P: LASP1 antibody testing of human lung cancer tissue



### Western Blotting

**Image 3.** Western blot testing of LASP1 antibody and Lane 1: rat liver ; 2: rat spleen; 3: rat intestine; 4: Jurkat; 5: MCF-7; 6: A431; 7: HeLa; 8: 293T. Expected size: 29KD

Please check the [product details page](#) for more images. Overall 5 images are available for ABIN3031619.