

Datasheet for ABIN3031627
anti-LIN28B antibody (AA 95-128)[Go to Product page](#)

9 Images

Overview

Quantity:	0.2 mL
Target:	LIN28B
Binding Specificity:	AA 95-128
Reactivity:	Human
Host:	Rabbit
Clonality:	Polyclonal
Conjugate:	This LIN28B antibody is un-conjugated
Application:	Western Blotting (WB), ELISA, Immunohistochemistry (IHC), Flow Cytometry (FACS), Immunofluorescence (IF)

Product Details

Immunogen:	A portion of amino acids 95-128 from the human protein was used as the immunogen for this LIN28B antibody.
Isotype:	Ig Fraction
Cross-Reactivity (Details):	Expected species reactivity: Mouse
Purification:	Antigen affinity purified

Target Details

Target:	LIN28B
Alternative Name:	LIN28B (LIN28B Products)

Target Details

Background: LIN28B is a suppressor of microRNA (miRNA) biogenesis, including that of let-7 and possibly of miR107, miR-143 and miR-200c. Binds primary let-7 transcripts (pri-let-7), including pri-let-7g and pri-let-7a-1, and sequester them in the nucleolus, away from the microprocessor complex, hence preventing their processing into mature miRNA. Does not act on pri-miR21. The repression of let-7 expression is required for normal development and contributes to maintain the pluripotent state of embryonic stem cells by preventing let-7-mediated differentiation. When overexpressed, recruits ZCCHC11/TUT4 uridylyltransferase to pre-let-7 transcripts, leading to their terminal uridylation and degradation. This activity might not be relevant in vivo, as LIN28B-mediated inhibition of let-7 miRNA maturation appears to be ZCCHC11-independent. Interaction with target pre-miRNAs occurs via an 5'-GGAG-3' motif in the pre-miRNA terminal loop. Mediates MYC-induced let-7 repression (By similarity). [UniProt]

UniProt: [Q6ZN17](#)

Application Details

Application Notes: Titration of the LIN28B antibody may be required due to differences in protocols and secondary/substrate sensitivity.\. Western blot: 1:1000,IHC (Paraffin): 1:10-1:50,Flow Cytometry: 1:10-1:50,Immunofluorescence: 1:10-1:50

Restrictions: For Research Use only

Handling

Format: Liquid

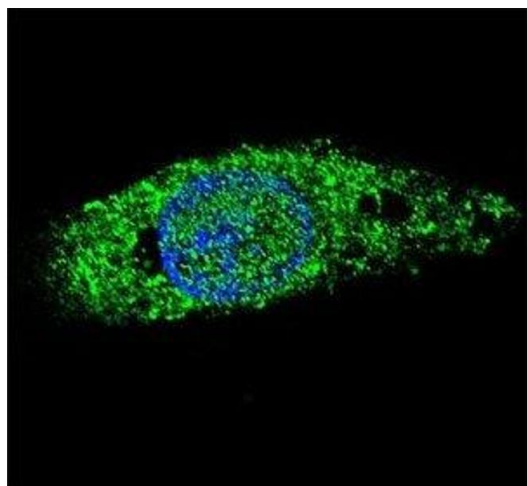
Buffer: In 1X PBS, pH 7.4, with 0.09 % sodium azide

Preservative: Sodium azide

Precaution of Use: This product contains Sodium azide: a POISONOUS AND HAZARDOUS SUBSTANCE which should be handled by trained staff only.

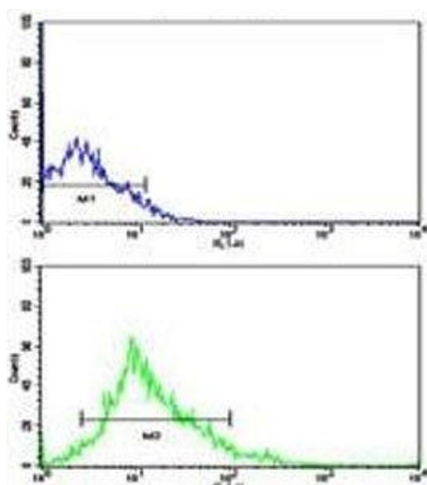
Storage: -20 °C

Storage Comment: Aliquot the LIN28B antibody and store frozen at -20°C or colder. Avoid repeated freeze-thaw cycles.



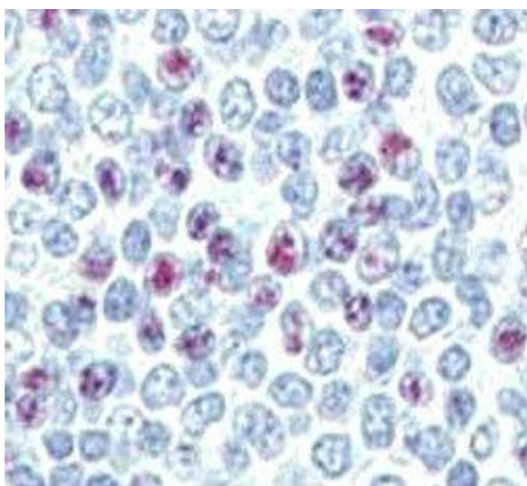
Immunofluorescence

Image 1. Confocal immunofluorescent analysis of LIN28B antibody and HepG2 cells with Alexa Fluor 488-conjugated secondary (green). DAPI was used to stain the cell nuclear (blue).



Flow Cytometry

Image 2. Flow cytometric analysis of HL-60 cells using LIN28B antibody (green)



Immunohistochemistry

Image 3. IHC analysis of FFPE human spleen tissue stained with LIN28B antibody

Please check the [product details page](#) for more images. Overall 9 images are available for ABIN3031627.