

Datasheet for ABIN3031629  
**anti-LIN28B antibody (AA 218-250)**[Go to Product page](#)

## 3 Images

## Overview

Quantity:	0.4 mL
Target:	LIN28B
Binding Specificity:	AA 218-250
Reactivity:	Human
Host:	Rabbit
Clonality:	Polyclonal
Conjugate:	This LIN28B antibody is un-conjugated
Application:	Western Blotting (WB), ELISA, Flow Cytometry (FACS)

## Product Details

Immunogen:	A portion of amino acids 218-250 from the human protein was used as the immunogen for this LIN28B antibody.
Isotype:	Ig Fraction
Purification:	Purified

## Target Details

Target:	LIN28B
Alternative Name:	LIN28B ( <a href="#">LIN28B Products</a> )
Background:	Lin-28 homolog B (LIN28B) is overexpressed in hepatocellular carcinoma. The heterochronic gene lin-28 is a key regulator of developmental timing in the nematode <i>Caenorhabditis elegans</i> . Similar with lin-28 proteins, LIN28B conserves a cold shock domain and a pair of CCHC zinc

## Target Details

finger domains. Phylogenetic analysis suggests that they might arise as a result of duplication from an ancestral gene. Overexpression of LIN28B was noted in most HCC cell lines and clinical samples. A short LIN28B isoform was also identified in non-tumor liver tissue and fetal liver. Although predominantly localized in the cytoplasm, LIN28B protein shows cell cycle-dependent nuclear translocation in Huh7 cells. Induced expression of exogenous LIN28B in a tet-off cell line promoted cancer cell proliferation.

UniProt: [Q6ZN17](#)

## Application Details

Application Notes: Titration of the LIN28B antibody may be required due to differences in protocols and secondary/substrate sensitivity.\. Western blot: 1:1000,Flow Cytometry: 1:10-1:50

Restrictions: For Research Use only

## Handling

Format: Liquid

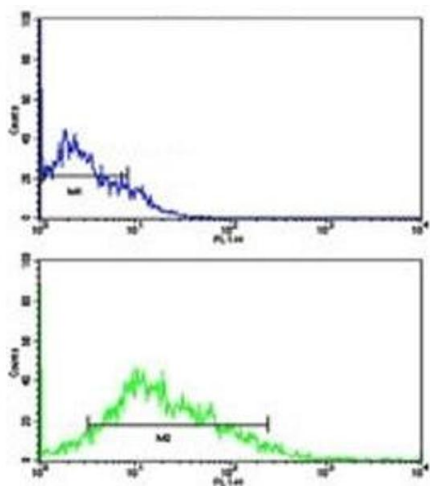
Buffer: In 1X PBS, pH 7.4, with 0.09 % sodium azide

Preservative: Sodium azide

Precaution of Use: This product contains Sodium azide: a POISONOUS AND HAZARDOUS SUBSTANCE which should be handled by trained staff only.

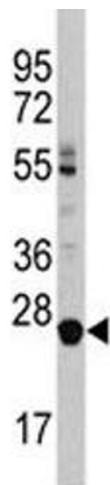
Storage: -20 °C

Storage Comment: Aliquot the LIN28B antibody and store frozen at -20°C or colder. Avoid repeated freeze-thaw cycles.



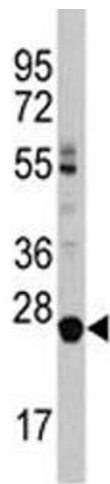
Flow Cytometry

**Image 1.** Flow cytometric analysis of HL-60 cells using LIN28B antibody (green) compared to a negative control (blue). FITC-conjugated goat-anti-rabbit secondary Ab was used for the analysis.



Western Blotting

**Image 2.** Western blot analysis of LIN28B antibody and HL-60 lysate



Western Blotting

**Image 3.** Western blot analysis of LIN28B antibody and HL-60 lysate