

Datasheet for ABIN3031639
anti-LRP2 antibody (AA 4626-4655)[Go to Product page](#)

2 Images

Overview

Quantity:	0.4 mL
Target:	LRP2
Binding Specificity:	AA 4626-4655
Reactivity:	Human
Host:	Rabbit
Clonality:	Polyclonal
Conjugate:	This LRP2 antibody is un-conjugated
Application:	ELISA, Immunohistochemistry (IHC)

Product Details

Immunogen:	A portion of amino acids 4626-4655 from the human protein was used as the immunogen for this Megalin antibody.
Isotype:	Ig Fraction
Purification:	Purified

Target Details

Target:	LRP2
Alternative Name:	Megalin (LRP2 Products)
Background:	Low density lipoprotein (LDL) receptor-related protein (LRP), a member of the LDL receptor family, binds multiple classes of ligands and has been implicated in a broad range of normal and disease processes involving lipid metabolism, protease clearance, and cell migration (1).

Target Details

Structurally, members of the LDLR family share homology within their extracellular domains, which are highlighted by the presence of clusters of ligand-binding repeats. LRP is a large endocytic receptor that participates in several biological pathways and plays prominent roles in lipoprotein metabolism and in the catabolism of proteinases involved in coagulation and fibrinolysis. LRP also mediates the cellular entry of certain viruses and toxins and facilitates the activation of various lysosomal enzymes (2). All LRPs are expressed in the central nervous system and, for most receptors, animal models have shown that they are indispensable for successful neurodevelopment. The mechanisms by which they regulate the formation of the nervous system are varied and include the transduction of extracellular signals and the modulation of intracellular signal propagation, as well as cargo transport, the function most commonly attributed to this gene family (3).

UniProt: [P98164](#)

Pathways: [Metabolism of Steroid Hormones and Vitamin D](#), [Thyroid Hormone Synthesis](#), [Hormone Transport](#)

Application Details

Application Notes: Titration of the Megalin antibody may be required due to differences in protocols and secondary/substrate sensitivity.\. IHC (Paraffin): 1:50-1:100

Restrictions: For Research Use only

Handling

Format: Liquid

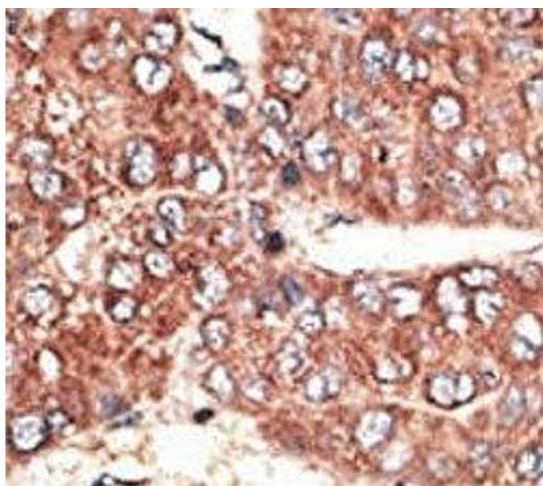
Buffer: In 1X PBS, pH 7.4, with 0.09 % sodium azide

Preservative: Sodium azide

Precaution of Use: This product contains Sodium azide: a POISONOUS AND HAZARDOUS SUBSTANCE which should be handled by trained staff only.

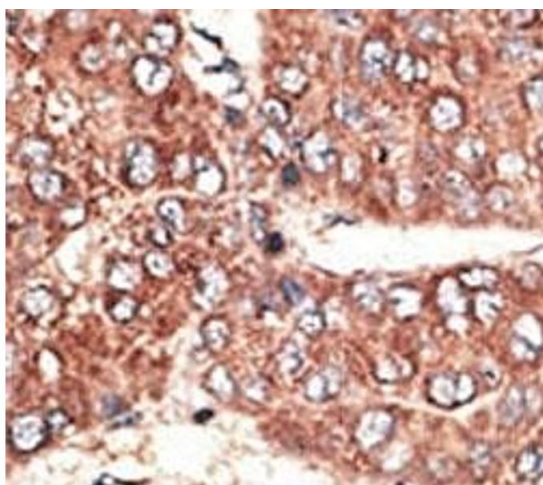
Storage: -20 °C

Storage Comment: Aliquot the Megalin antibody and store frozen at -20°C or colder. Avoid repeated freeze-thaw cycles.



Immunohistochemistry

Image 1. IHC analysis of FFPE human hepatocarcinoma tissue stained with the Megalin antibody



Immunohistochemistry

Image 2. IHC analysis of FFPE human hepatocarcinoma tissue stained with the Megalin antibody