

Datasheet for ABIN3031641
anti-LRP5 antibody (AA 1538-1567)

3 Images

[Go to Product page](#)

Overview

Quantity:	0.4 mL
Target:	LRP5
Binding Specificity:	AA 1538-1567
Reactivity:	Human, Mouse
Host:	Rabbit
Clonality:	Polyclonal
Conjugate:	This LRP5 antibody is un-conjugated
Application:	Western Blotting (WB), Immunohistochemistry (IHC), ELISA

Product Details

Immunogen:	A portion of amino acids 1538-1567 from the human protein was used as the immunogen for this LRP5 antibody.
Isotype:	Ig Fraction
Purification:	Purified

Target Details

Target:	LRP5
Alternative Name:	LRP5 (LRP5 Products)
Background:	Low density lipoprotein (LDL) receptor-related protein (LRP), a member of the LDL receptor family, binds multiple classes of ligands and has been implicated in a broad range of normal and disease processes involving lipid metabolism, protease clearance, and cell migration.

Target Details

Structurally, members of the LDLR family share homology within their extracellular domains, which are highlighted by the presence of clusters of ligand-binding repeats. LRP is a large endocytic receptor that participates in several biological pathways and plays prominent roles in lipoprotein metabolism and in the catabolism of proteinases involved in coagulation and fibrinolysis. LRP also mediates the cellular entry of certain viruses and toxins and facilitates the activation of various lysosomal enzymes. All LRPs are expressed in the central nervous system and, for most receptors, animal models have shown that they are indispensable for successful neurodevelopment. The mechanisms by which they regulate the formation of the nervous system are varied and include the transduction of extracellular signals and the modulation of intracellular signal propagation, as well as cargo transport, the function most commonly attributed to this gene family.

UniProt: [O75197](#)

Pathways: [WNT Signaling](#), [Stem Cell Maintenance](#), [Positive Regulation of fat Cell Differentiation](#)

Application Details

Application Notes: Titration of the LRP5 antibody may be required due to differences in protocols and secondary/substrate sensitivity.\. Western blot: 1:1000,IHC (Paraffin): 1:50-1:100

Restrictions: For Research Use only

Handling

Format: Liquid

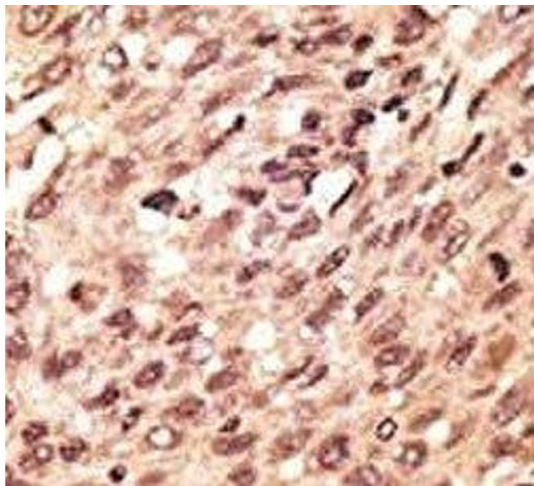
Buffer: In 1X PBS pH 7.4 with 0.09 % sodium azide

Preservative: Sodium azide

Precaution of Use: This product contains Sodium azide: a POISONOUS AND HAZARDOUS SUBSTANCE which should be handled by trained staff only.

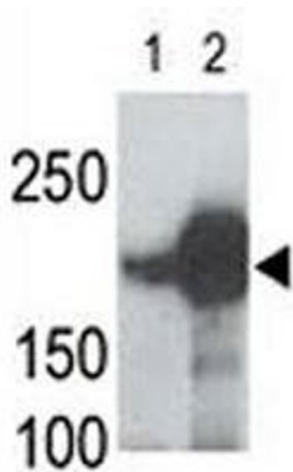
Storage: -20 °C

Storage Comment: Aliquot the LRP5 antibody and store frozen at -20°C or colder. Avoid repeated freeze-thaw cycles.



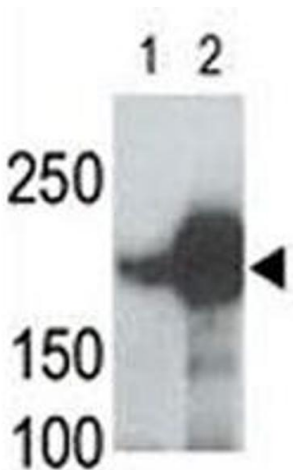
Immunohistochemistry

Image 1. IHC analysis of FFPE human hepatocarcinoma stained with the LRP5 antibody



Western Blotting

Image 2. LRP5 antibody used in western blot to detect recombinant human LRP5 (Lane 1) and mouse LRP5 (2) proteins in transfected 293 cell lysate; Data is kindly provided by Drs. V. Harris and S. Aaronson from the Mount Sinai School of Medicine



Western Blotting

Image 3. LRP5 antibody used in western blot to detect recombinant human LRP5 (Lane 1) and mouse LRP5 (2) proteins in transfected 293 cell lysate