



[Go to Product page](#)

Datasheet for ABIN3031644  
**anti-LCK antibody (AA 23-52)**

6 Images

### Overview

Quantity:	0.4 mL
Target:	LCK
Binding Specificity:	AA 23-52
Reactivity:	Human, Mouse, Rat
Host:	Rabbit
Clonality:	Polyclonal
Conjugate:	This LCK antibody is un-conjugated
Application:	Western Blotting (WB), ELISA, Immunohistochemistry (IHC), Immunofluorescence (IF), Flow Cytometry (FACS)

### Product Details

Immunogen:	A portion of amino acids 23-52 from the human protein was used as the immunogen for this LCK antibody.
Isotype:	Ig Fraction
Purification:	Antigen affinity purified

### Target Details

Target:	LCK
Alternative Name:	LCK ( <a href="#">LCK Products</a> )
Background:	LSK, which belongs to the SRC subfamily of Tyr protein kinases, may participate in antigen-induced T-cell activation. It binds to phosphatidylinositol 3'-kinase (PI3K) from T lymphocytes

## Target Details

---

through its SH3 domain and to the tyrosine phosphorylated form of KHDRBS1/p70 through its SH2 domain. LSK is bound to the cytoplasmic domain of either CD4 or CD8. This protein is involved in leukemias by a chromosomal translocation t(1,7)(p34,q34) which involves LCK and T-cell receptor beta chain (TCRB) genes.

UniProt: [P06239](#)

Pathways: [TCR Signaling](#), [Fc-epsilon Receptor Signaling Pathway](#), [EGFR Signaling Pathway](#), [Neurotrophin Signaling Pathway](#), [Transition Metal Ion Homeostasis](#), [Positive Regulation of Endopeptidase Activity](#), [CXCR4-mediated Signaling Events](#), [Thromboxane A2 Receptor Signaling](#)

## Application Details

---

Application Notes: Titration of the LCK antibody may be required due to differences in protocols and secondary/substrate sensitivity.\. Western blot: 1:1000,IHC (Paraffin): 1:50-1:100,Immunofluorescence: 1:10-1:50,Flow Cytometry: 1:10-1:50

Restrictions: For Research Use only

## Handling

---

Format: Liquid

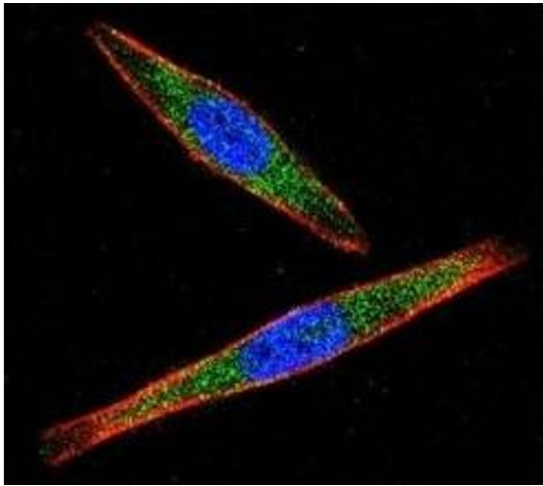
Buffer: In 1X PBS, pH 7.4, with 0.09 % sodium azide

Preservative: Sodium azide

Precaution of Use: This product contains Sodium azide: a POISONOUS AND HAZARDOUS SUBSTANCE which should be handled by trained staff only.

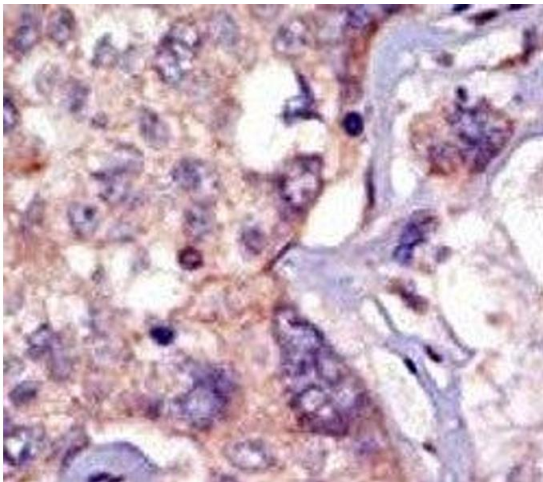
Storage: -20 °C

Storage Comment: Aliquot the LCK antibody and store frozen at -20°C or colder. Avoid repeated freeze-thaw cycles.



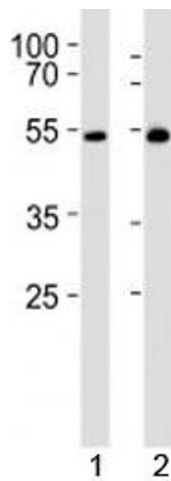
### Immunofluorescence

**Image 1.** Confocal immunofluorescent analysis of LCK antibody with A2058 cells followed by Alexa Fluor 488-conjugated goat anti-rabbit IgG (green). Actin filaments have been labeled with Alexa Fluor 555 Phalloidin (red). DAPI was used as a nuclear counterstain (blue).



### Immunohistochemistry

**Image 2.** IHC analysis of FFPE human breast carcinoma tissue stained with the LCK antibody.



### Western Blotting

**Image 3.** Western blot analysis of lysate from 1) mouse thymus and 2) rat thymus tissue lysate using LCK antibody at 1:1000. Predicted molecular weight ~58 kDa.

Please check the [product details page](#) for more images. Overall 6 images are available for ABIN3031644.