

Datasheet for ABIN3031651
anti-LSD1 antibody (AA 108-142)



[Go to Product page](#)

7 Images

Overview

Quantity:	0.4 mL
Target:	LSD1 (KDM1A)
Binding Specificity:	AA 108-142
Reactivity:	Human, Mouse
Host:	Rabbit
Clonality:	Polyclonal
Conjugate:	This LSD1 antibody is un-conjugated
Application:	Western Blotting (WB), ELISA, Immunohistochemistry (IHC), Immunofluorescence (IF)

Product Details

Immunogen:	A portion of amino acids 108-142 from the human protein was used as the immunogen for this LSD1 antibody.
Isotype:	Ig Fraction
Purification:	Purified

Target Details

Target:	LSD1 (KDM1A)
Alternative Name:	LSD1 (KDM1A Products)
Background:	LSD1 is a histone demethylase that specifically demethylates 'Lys-4' of histone H3, a specific tag for epigenetic transcriptional activation, thereby acting as a corepressor. LSD1 contains a SWIRM domain, a FAD-binding motif, and an amine oxidase domain. This protein is a

Target Details

component of several histone deacetylase complexes, though it silences genes by functioning as a histone demethylase. It acts by oxidizing the substrate by FAD to generate the corresponding imine that is subsequently hydrolyzed. LSD1 demethylates both mono- and trimethylated 'Lys-4' of histone H3. This protein may play a role in the repression of neuronal genes. Alone, it is unable to demethylate H3 'Lys-4' on nucleosomes and requires the presence of RCOR1/CoREST to achieve such activity. It may also demethylate 'Lys-9' of histone H3, a specific tag for epigenetic transcriptional repression, thereby leading to derepression of androgen receptor target genes.

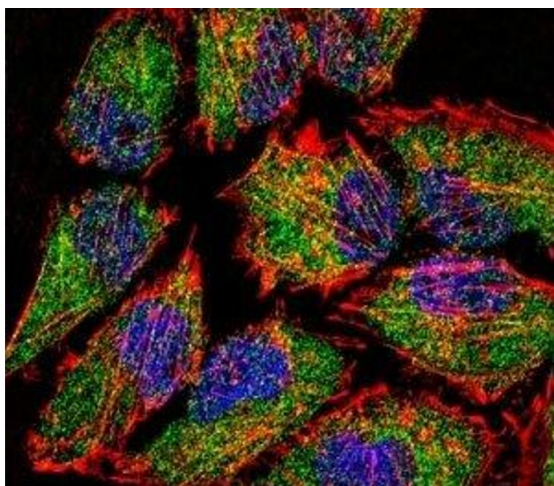
UniProt:	O60341
Pathways:	Regulation of Hormone Metabolic Process , Regulation of Hormone Biosynthetic Process , Negative Regulation of intrinsic apoptotic Signaling , Warburg Effect

Application Details

Application Notes:	Titration of the LSD1 antibody may be required due to differences in protocols and secondary/substrate sensitivity.\. Western blot: 1:1000,IHC (Paraffin): 1:50-1:100,Immunofluorescence: 1:10-1:50
Restrictions:	For Research Use only

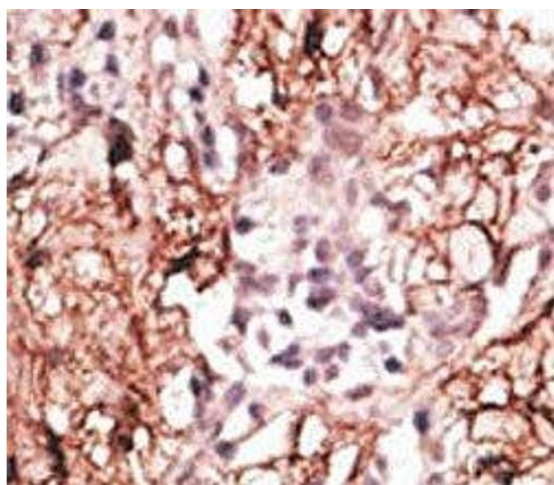
Handling

Format:	Liquid
Buffer:	In 1X PBS, pH 7.4, with 0.09 % sodium azide
Preservative:	Sodium azide
Precaution of Use:	This product contains Sodium azide: a POISONOUS AND HAZARDOUS SUBSTANCE which should be handled by trained staff only.
Storage:	-20 °C
Storage Comment:	Aliquot the LSD1 antibody and store frozen at -20°C or colder. Avoid repeated freeze-thaw cycles.



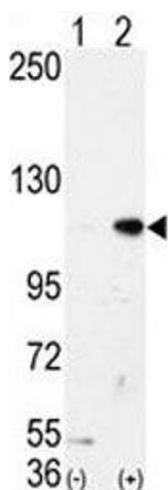
Immunofluorescence

Image 1. Fluorescent confocal image of HeLa cell stained with LSD1 antibody. LSD1 immunoreactivity is localized to the cytoplasm strongly and nucleus weakly.



Immunohistochemistry

Image 2. IHC analysis of FFPE human breast carcinoma tissue stained with the LSD1 antibody



Western Blotting

Image 3. Western blot analysis of LSD1 antibody and 293 cell lysate either nontransfected (Lane 1) or transiently transfected with the AOF2/LSD1 gene (2).

Please check the [product details page](#) for more images. Overall 7 images are available for ABIN3031651.