



Datasheet for ABIN3031655
anti-KDM6A antibody (C-Term)



[Go to Product page](#)

2 Images

Overview

Quantity:	0.4 mL
Target:	KDM6A
Binding Specificity:	C-Term
Reactivity:	Mouse
Host:	Rabbit
Clonality:	Polyclonal
Conjugate:	This KDM6A antibody is un-conjugated
Application:	Western Blotting (WB), ELISA

Product Details

Immunogen:	This mouse Kdm6a antibody was produced from a rabbit immunized with a KLH conjugated synthetic peptide between 1041-1074 amino acids from the C-terminal region of mouse Kdm6a.
Isotype:	Ig Fraction
Purification:	Antigen affinity purified

Target Details

Target:	KDM6A
Alternative Name:	Kdm6a (KDM6A Products)
Background:	Histone demethylase that specifically demethylates 'Lys- 27' of histone H3, thereby playing a central role in histone code. Demethylates trimethylated and dimethylated but not

Target Details

monomethylated H3 'Lys-27'. Plays a central role in regulation of posterior development, by regulating HOX gene expression. Demethylation of 'Lys-27' of histone H3 is concomitant with methylation of 'Lys-4' of histone H3, and regulates the recruitment of the PRC1 complex and monoubiquitination of histone H2A (By similarity).

UniProt: [070546](#)

Pathways: [Tube Formation](#), [Warburg Effect](#)

Application Details

Application Notes: Titration of the Kdm6a antibody may be required due to differences in protocols and secondary/substrate sensitivity.\. Western blot: 1:2000

Restrictions: For Research Use only

Handling

Format: Liquid

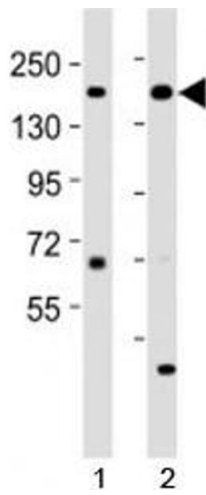
Buffer: In 1X PBS, pH 7.4, with 0.09 % sodium azide

Preservative: Sodium azide

Precaution of Use: This product contains Sodium azide: a POISONOUS AND HAZARDOUS SUBSTANCE which should be handled by trained staff only.

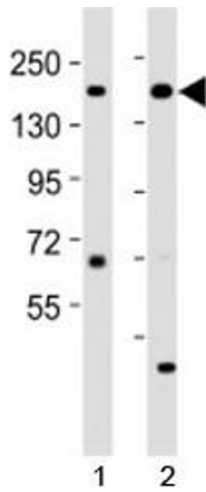
Storage: -20 °C

Storage Comment: Aliquot the Kdm6a antibody and store frozen at -20°C or colder. Avoid repeated freeze-thaw cycles.



Western Blotting

Image 1. Western blot testing of Kdm6a antibody at 1:2000 dilution. Lane 1: mouse cerebellum lysate; 2: mouse spleen lysate; Predicted molecular weight ~ 154 kDa.



Western Blotting

Image 2. Western blot testing of Kdm6a antibody at 1:2000 dilution. Lane 1: mouse cerebellum lysate