



[Go to Product page](#)

Datasheet for ABIN3031658
anti-Kdm6b antibody (AA 1023-1057)

2 Images

Overview

Quantity:	0.4 mL
Target:	Kdm6b
Binding Specificity:	AA 1023-1057
Reactivity:	Human, Mouse
Host:	Rabbit
Clonality:	Polyclonal
Conjugate:	This Kdm6b antibody is un-conjugated
Application:	Western Blotting (WB), ELISA

Product Details

Immunogen:	This Kdm6b antibody was produced from a rabbit immunized with a KLH conjugated synthetic peptide between 1023-1057 amino acids from mouse Kdm6b.
Isotype:	Ig Fraction
Purification:	Antigen affinity purified

Target Details

Target:	Kdm6b
Alternative Name:	Kdm6b (Kdm6b Products)
Background:	Histone demethylase that specifically demethylates 'Lys- 27' of histone H3, thereby playing a central role in histone code. Demethylates trimethylated and dimethylated H3 'Lys-27'. Plays a central role in regulation of posterior development, by regulating HOX gene expression. Involved

Target Details

in inflammatory response by participating in macrophage differentiation in case of inflammation by regulating gene expression and macrophage differentiation.

UniProt: [Q5NCY0](#)

Pathways: [Warburg Effect](#)

Application Details

Application Notes: Titration of the Kdm6b antibody may be required due to differences in protocols and secondary/substrate sensitivity.\. Western blot: 1:1000

Restrictions: For Research Use only

Handling

Format: Liquid

Buffer: In 1X PBS, pH 7.4, with 0.09 % sodium azide

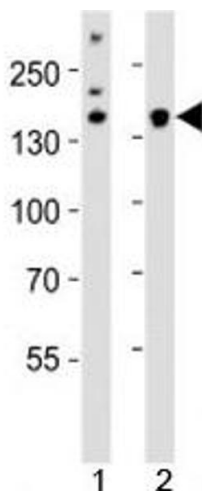
Preservative: Sodium azide

Precaution of Use: This product contains Sodium azide: a POISONOUS AND HAZARDOUS SUBSTANCE which should be handled by trained staff only.

Storage: -20 °C

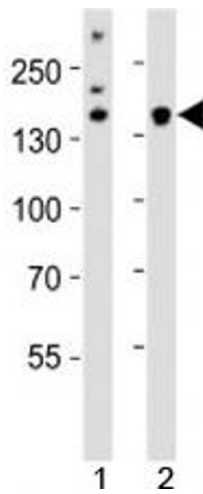
Storage Comment: Aliquot the Kdm6b antibody and store frozen at -20°C or colder. Avoid repeated freeze-thaw cycles.

Images



Western Blotting

Image 1. Western blot analysis of lysate from 1) HeLa cell line and 2) mouse cerebellum tissue using Kdm6b antibody at 1:1000. Predicted molecular weight ~176 kDa.



Western Blotting

Image 2. Western blot analysis of lysate from 1) HeLa cell line and 2) mouse cerebellum tissue using Kdm6b antibody at 1:1000. Predicted molecular weight ~176 kDa.