

Datasheet for ABIN3031663  
**anti-LAMP1 antibody (AA 125-154)**

## 5 Images

[Go to Product page](#)

## Overview

Quantity:	0.4 mL
Target:	LAMP1
Binding Specificity:	AA 125-154
Reactivity:	Human, Mouse
Host:	Rabbit
Clonality:	Polyclonal
Conjugate:	This LAMP1 antibody is un-conjugated
Application:	Western Blotting (WB), Immunohistochemistry (IHC), Immunofluorescence (IF), ELISA

## Product Details

Immunogen:	A portion of amino acids 125-154 from the human protein was used as the immunogen for this LAMP1 antibody.
Isotype:	Ig Fraction
Purification:	Antigen affinity purified

## Target Details

Target:	LAMP1
Alternative Name:	LAMP1 ( <a href="#">LAMP1 Products</a> )
Background:	The LAMP1 glycoprotein is a type I transmembrane protein which is expressed at high or medium levels in at least 76 different normal tissue cell types. It resides primarily across lysosomal membranes, and functions to provide selectins with carbohydrate ligands. It has

## Target Details

also been shown to be a marker of degranulation on lymphocytes such as CD8+ and NK cells and may also play a role in tumor cell differentiation and metastasis. [Wiki]

UniProt: [P11279](#)

Pathways: [Autophagy](#)

## Application Details

Application Notes: Titration of the LAMP1 antibody may be required due to differences in protocols and secondary/substrate sensitivity.\. Western blot: 1:1000,Immunofluorescence: 1:200,IHC (Paraffin): 1:10-1:50

Restrictions: For Research Use only

## Handling

Format: Liquid

Buffer: In 1X PBS pH 7.4 with 0.09 % sodium azide

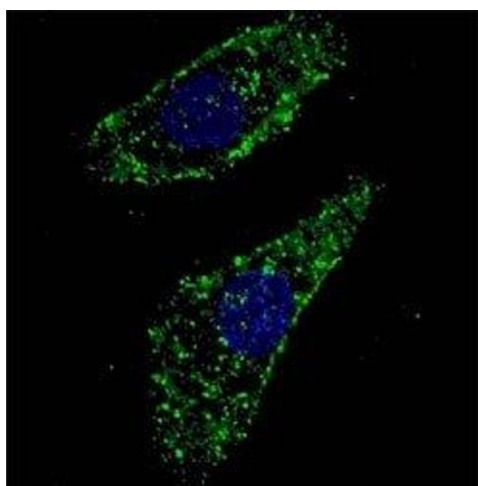
Preservative: Sodium azide

Precaution of Use: This product contains Sodium azide: a POISONOUS AND HAZARDOUS SUBSTANCE which should be handled by trained staff only.

Storage: -20 °C

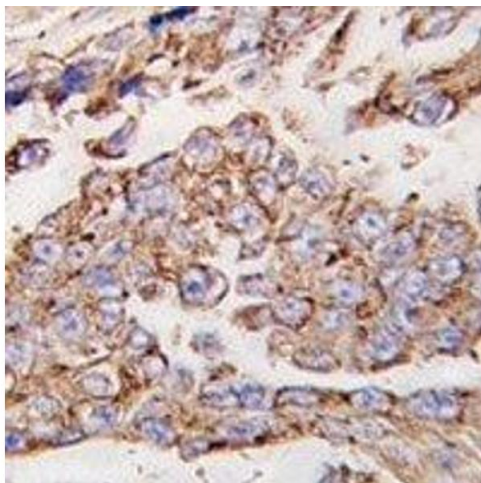
Storage Comment: Aliquot the LAMP1 antibody and store frozen at -20°C or colder. Avoid repeated freeze-thaw cycles.

## Images



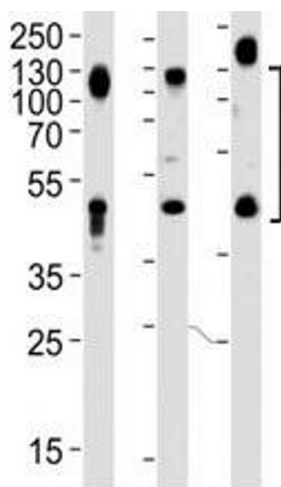
### Immunofluorescence

**Image 1.** Fluorescent image of U251 cells stained with LAMP1 antibody at 1:200. Immunoreactivity is localized to autophagic vacuoles in the cytoplasm.



#### Immunohistochemistry

**Image 2.** IHC analysis of FFPE human lung carcinoma tissue stained with LAMP1 antibody



#### Western Blotting

**Image 3.** Western blot analysis of lysate from HeLa, HT1080 and human placenta lysate (left to right), using LAMP1 antibody at 1:1000. This heavily glycosylated protein of 417 amino acids is visualized at up to 140KD.

Please check the [product details page](#) for more images. Overall 5 images are available for ABIN3031663.