

Datasheet for ABIN3031668
anti-LOXL2 antibody (AA 589-617)



[Go to Product page](#)

2 Images

Overview

Quantity:	0.4 mL
Target:	LOXL2
Binding Specificity:	AA 589-617
Reactivity:	Human
Host:	Rabbit
Clonality:	Polyclonal
Conjugate:	This LOXL2 antibody is un-conjugated
Application:	Western Blotting (WB), ELISA

Product Details

Immunogen:	A portion of amino acids 589-617 from the human protein was used as the immunogen for this LOXL2 antibody.
Isotype:	Ig Fraction
Cross-Reactivity (Details):	Expected species reactivity: Mouse, Rat, Bovine, Chicken
Purification:	Antigen affinity purified

Target Details

Target:	LOXL2
Alternative Name:	LOXL2 (LOXL2 Products)
Background:	This gene encodes a member of the lysyl oxidase gene family. The prototypic member of the

Target Details

family is essential to the biogenesis of connective tissue, encoding an extracellular copper-dependent amine oxidase that catalyses the first step in the formation of crosslinks in collagens and elastin. A highly conserved amino acid sequence at the C-terminus end appears to be sufficient for amine oxidase activity, suggesting that each family member may retain this function. The N-terminus is poorly conserved and may impart additional roles in developmental regulation, senescence, tumor suppression, cell growth control, and chemotaxis to each member of the family.

UniProt: [Q9Y4K0](#)

Pathways: [Chromatin Binding](#)

Application Details

Application Notes: Titration of the LOXL2 antibody may be required due to differences in protocols and secondary/substrate sensitivity.\. Western blot: 1:1000

Restrictions: For Research Use only

Handling

Format: Liquid

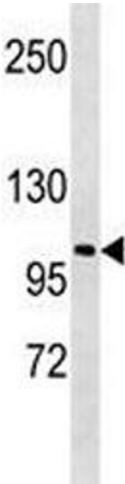
Buffer: In 1X PBS, pH 7.4, with 0.09 % sodium azide

Preservative: Sodium azide

Precaution of Use: This product contains Sodium azide: a POISONOUS AND HAZARDOUS SUBSTANCE which should be handled by trained staff only.

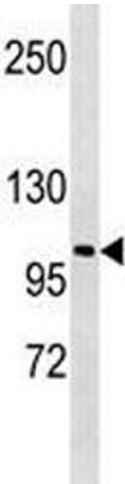
Storage: -20 °C

Storage Comment: Aliquot the LOXL2 antibody and store frozen at -20°C or colder. Avoid repeated freeze-thaw cycles.



Western Blotting

Image 1. LOXL2 antibody western blot analysis in A549 lysate.



Western Blotting

Image 2. LOXL2 antibody western blot analysis in A549 lysate.