

Datasheet for ABIN3031669
anti-LOXL3 antibody (AA 715-744)[Go to Product page](#)

3 Images

Overview

Quantity:	0.4 mL
Target:	LOXL3
Binding Specificity:	AA 715-744
Reactivity:	Human
Host:	Rabbit
Clonality:	Polyclonal
Conjugate:	This LOXL3 antibody is un-conjugated
Application:	Western Blotting (WB), Immunohistochemistry (IHC), ELISA

Product Details

Immunogen:	A portion of amino acids 715-744 from the human protein was used as the immunogen for this LOXL3 antibody.
Isotype:	Ig Fraction
Cross-Reactivity (Details):	Expected species reactivity: Mouse
Purification:	Antigen affinity purified

Target Details

Target:	LOXL3
Alternative Name:	LOXL3 (LOXL3 Products)
Background:	This gene encodes a member of the lysyl oxidase gene family. The prototypic member of the

Target Details

family is essential to the biogenesis of connective tissue, encoding an extracellular copper-dependent amine oxidase that catalyses the first step in the formation of crosslinks in collagens and elastin. A highly conserved amino acid sequence at the C-terminus end appears to be sufficient for amine oxidase activity, suggesting that each family member may retain this function. The N-terminus is poorly conserved and may impart additional roles in developmental regulation, senescence, tumor suppression, cell growth control, and chemotaxis to each member of the family. Alternatively spliced transcript variants of this gene have been reported but their full-length nature has not been determined.

UniProt: [P58215](#)

Application Details

Application Notes: Titration of the LOXL3 antibody may be required due to differences in protocols and secondary/substrate sensitivity.\. Western blot: 1:1000,IHC (Paraffin): 1:10-1:50

Restrictions: For Research Use only

Handling

Format: Liquid

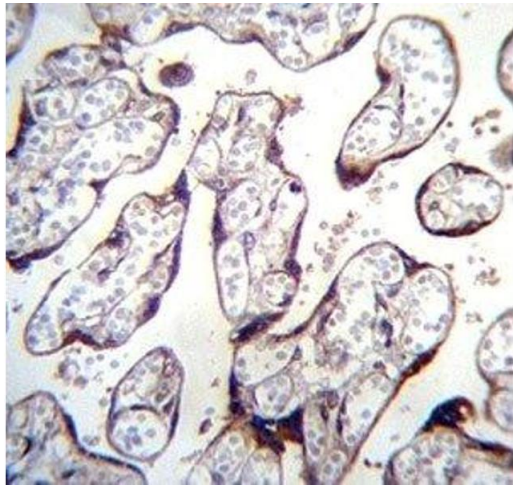
Buffer: In 1X PBS, pH 7.4, with 0.09 % sodium azide

Preservative: Sodium azide

Precaution of Use: This product contains Sodium azide: a POISONOUS AND HAZARDOUS SUBSTANCE which should be handled by trained staff only.

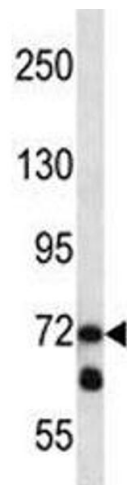
Storage: -20 °C

Storage Comment: Aliquot the LOXL3 antibody and store frozen at -20°C or colder. Avoid repeated freeze-thaw cycles.



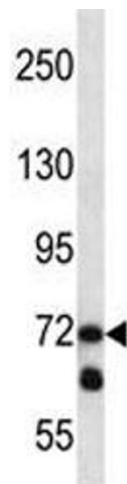
Immunohistochemistry

Image 1. LOXL3 antibody immunohistochemistry analysis in formalin fixed and paraffin embedded human placenta tissue.



Western Blotting

Image 2. LOXL3 antibody western blot analysis in NCI-H292 lysate.



Western Blotting

Image 3. LOXL3 antibody western blot analysis in NCI-H292 lysate.