

Datasheet for ABIN3031678  
**anti-HLA-A antibody (AA 70-99)**[Go to Product page](#)

## 2 Images

## Overview

Quantity:	0.4 mL
Target:	HLA-A
Binding Specificity:	AA 70-99
Reactivity:	Mouse
Host:	Mouse
Clonality:	Monoclonal
Conjugate:	This HLA-A antibody is un-conjugated
Application:	Western Blotting (WB), ELISA

## Product Details

Immunogen:	A portion of amino acids 70-99 from the human protein was used as the immunogen for this HLA-A antibody.
Clone:	7G7F9
Isotype:	IgG1
Cross-Reactivity (Details):	Expected species reactivity: Human
Purification:	Purified

## Target Details

Target:	HLA-A
Alternative Name:	HLA-A ( <a href="#">HLA-A Products</a> )

## Target Details

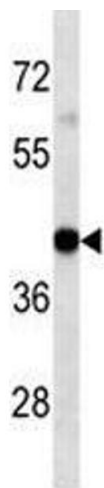
Background:	HLA-A belongs to the HLA class I heavy chain paralogues. This class I molecule is a heterodimer consisting of a heavy chain and a light chain (beta-2 microglobulin). The heavy chain is anchored in the membrane. Class I molecules play a central role in the immune system by presenting peptides derived from the endoplasmic reticulum lumen. They are expressed in nearly all cells. The heavy chain is approximately 45 kDa and its gene contains 8 exons. Exon 1 encodes the leader peptide, exons 2 and 3 encode the alpha1 and alpha2 domains, which both bind the peptide, exon 4 encodes the alpha3 domain, exon 5 encodes the transmembrane region, and exons 6 and 7 encode the cytoplasmic tail. Polymorphisms within exon 2 and exon 3 are responsible for the peptide binding specificity of each class one molecule. Typing for these polymorphisms is routinely done for bone marrow and kidney transplantation. Hundreds of HLA-A alleles have been described.
UniProt:	<a href="#">P04439</a>
Pathways:	<a href="#">TCR Signaling</a> , <a href="#">Regulation of Leukocyte Mediated Immunity</a> , <a href="#">Positive Regulation of Immune Effector Process</a> , <a href="#">Cancer Immune Checkpoints</a> , <a href="#">Human Leukocyte Antigen (HLA) in Adaptive Immune Response</a>

## Application Details

Application Notes:	Titration of the HLA-A antibody may be required due to differences in protocols and secondary/substrate sensitivity.\. Western blot: 1:100-1:250
Restrictions:	For Research Use only

## Handling

Format:	Liquid
Buffer:	In 1X PBS pH 7.4 with 0.09 % sodium azide
Preservative:	Sodium azide
Precaution of Use:	This product contains Sodium azide: a POISONOUS AND HAZARDOUS SUBSTANCE which should be handled by trained staff only.
Storage:	-20 °C
Storage Comment:	Aliquot the HLA-A antibody and store frozen at -20°C or colder. Avoid repeated freeze-thaw cycles.



Western Blotting

**Image 1.** HLA-A antibody western blot analysis in mouse liver tissue lysate



Western Blotting

**Image 2.** HLA-A antibody western blot analysis in mouse liver tissue lysate