

Datasheet for ABIN3031704
anti-KIT antibody (AA 106-135)[Go to Product page](#)

7 Images

Overview

Quantity:	0.4 mL
Target:	KIT
Binding Specificity:	AA 106-135
Reactivity:	Human, Mouse
Host:	Rabbit
Clonality:	Polyclonal
Conjugate:	This KIT antibody is un-conjugated
Application:	ELISA, Western Blotting (WB), Flow Cytometry (FACS), Immunohistochemistry (IHC)

Product Details

Immunogen:	A portion of amino acids 106-135 from the human protein was used as the immunogen for this c-Kit antibody.
Isotype:	Ig Fraction
Purification:	Purified

Target Details

Target:	KIT
Alternative Name:	C-Kit (KIT Products)
Background:	KIT is the human homolog of the proto-oncogene c-kit. c-Kit was first identified as the cellular homolog of the feline sarcoma viral oncogene v-kit. KIT is a type 3 transmembrane receptor for MGF (mast cell growth factor, also known as stem cell factor). Mutations in KIT are associated

Target Details

with gastrointestinal stromal tumors, mast cell disease, acute myelogenous leukemia, and piebaldism.

UniProt: [P10721](#)

Pathways: [RTK Signaling](#), [Fc-epsilon Receptor Signaling Pathway](#), [EGFR Signaling Pathway](#), [Neurotrophin Signaling Pathway](#), [Sensory Perception of Sound](#), [Stem Cell Maintenance](#), [Production of Molecular Mediator of Immune Response](#), [Regulation of long-term Neuronal Synaptic Plasticity](#)

Application Details

Application Notes: Titration of the c-Kit antibody may be required due to differences in protocols and secondary/substrate sensitivity.\. Western blot: 1:1000,IHC (Paraffin): 1:10-1:50,Flow Cytometry: 1:10-1:50

Restrictions: For Research Use only

Handling

Format: Liquid

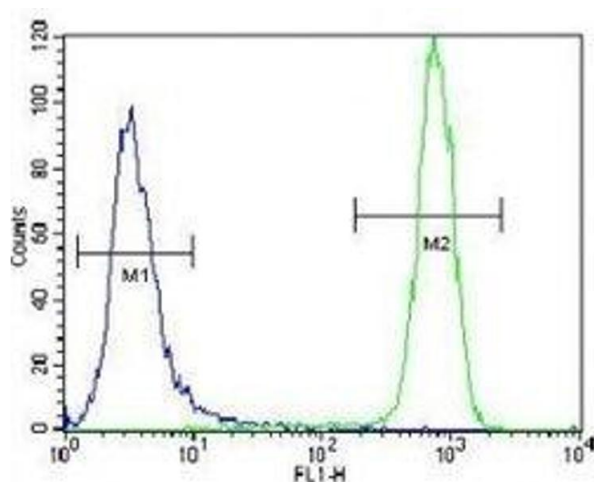
Buffer: In 1X PBS pH 7.4 with 0.09 % sodium azide

Preservative: Sodium azide

Precaution of Use: This product contains Sodium azide: a POISONOUS AND HAZARDOUS SUBSTANCE which should be handled by trained staff only.

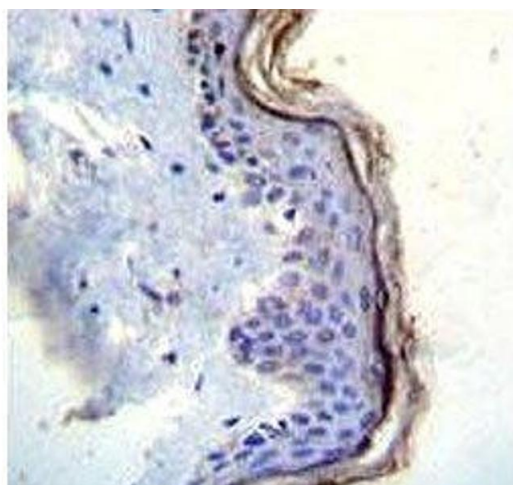
Storage: -20 °C

Storage Comment: Aliquot the c-Kit antibody and store frozen at -20°C or colder. Avoid repeated freeze-thaw cycles.



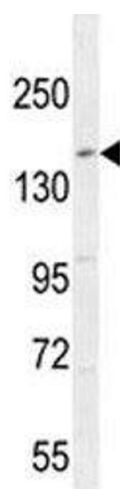
Flow Cytometry

Image 1. c-Kit antibody flow cytometric analysis of NCI-H460 cells (green) compared to a negative control cell (blue). FITC-conjugated goat-anti-rabbit secondary Ab was used for the analysis.



Immunohistochemistry

Image 2. c-Kit antibody immunohistochemistry analysis in formalin fixed and paraffin embedded human skin tissue.



Western Blotting

Image 3. c-Kit antibody western blot analysis in mouse testis tissue lysate

Please check the [product details page](#) for more images. Overall 7 images are available for ABIN3031704.