



[Go to Product page](#)

Datasheet for ABIN3031705
anti-MELK antibody (C-Term)

2 Images

Overview

Quantity:	0.4 mL
Target:	MELK
Binding Specificity:	AA 434-468, C-Term
Reactivity:	Mouse
Host:	Rabbit
Clonality:	Polyclonal
Conjugate:	This MELK antibody is un-conjugated
Application:	Western Blotting (WB), ELISA

Product Details

Immunogen:	This mouse Melk antibody was produced from a rabbit immunized with a KLH conjugated synthetic peptide between 434-468 amino acids from the C-terminal region of mouse Melk.
Isotype:	Ig Fraction
Purification:	Antigen affinity purified

Target Details

Target:	MELK
Alternative Name:	Melk (MELK Products)
Background:	Serine/threonine-protein kinase involved in various processes such as cell cycle regulation, self-renewal of stem cells, apoptosis and splicing regulation. Has a broad substrate specificity, phosphorylates BCL2L14, CDC25B, MAP3K5/ASK1 and ZNF622. Acts as an activator of

Target Details

apoptosis by phosphorylating and activating MAP3K5/ASK1. Acts as a regulator of cell cycle, notably by mediating phosphorylation of CDC25B, promoting localization of CDC25B to the centrosome and the spindle poles during mitosis. Plays a key role in cell proliferation. Required for proliferation of embryonic and postnatal multipotent neural progenitors. Phosphorylates and inhibits BCL2L14. Also involved in the inhibition of spliceosome assembly during mitosis by phosphorylating ZNF622, thereby contributing to its redirection to the nucleus. May also play a role in primitive hematopoiesis.

UniProt: [Q61846](#)

Application Details

Application Notes: Titration of the Melk antibody may be required due to differences in protocols and secondary/substrate sensitivity.\. Western blot: 1:1000

Restrictions: For Research Use only

Handling

Format: Liquid

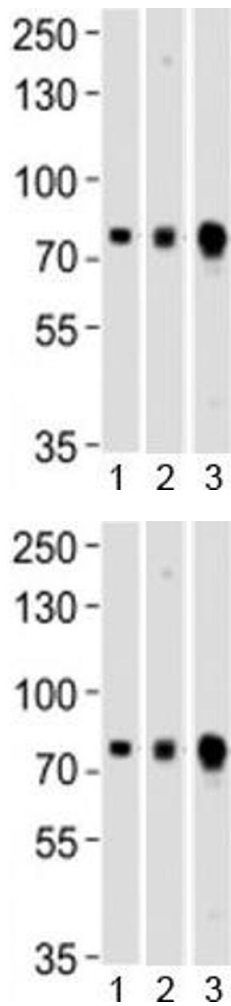
Buffer: In 1X PBS, pH 7.4, with 0.09 % sodium azide

Preservative: Sodium azide

Precaution of Use: This product contains Sodium azide: a POISONOUS AND HAZARDOUS SUBSTANCE which should be handled by trained staff only.

Storage: -20 °C

Storage Comment: Aliquot the Melk antibody and store frozen at -20°C or colder. Avoid repeated freeze-thaw cycles.



Western Blotting

Image 1. Western blot testing of Melk antibody at 1:1000 dilution and mouse 1) ovary, 2) spleen and 3) testis lysate; Predicted molecular weight ~ 73 kDa.

Western Blotting

Image 2. Western blot testing of Melk antibody at 1:1000 dilution and mouse 1) ovary, 2) spleen and 3) testis lysate