



[Go to Product page](#)

Datasheet for ABIN3031709
anti-MMP1 antibody (AA 317-347)

5 Images

Overview

Quantity:	0.4 mL
Target:	MMP1
Binding Specificity:	AA 317-347
Reactivity:	Human
Host:	Rabbit
Clonality:	Polyclonal
Conjugate:	This MMP1 antibody is un-conjugated
Application:	Western Blotting (WB), ELISA, Immunohistochemistry (IHC), Immunofluorescence (IF)

Product Details

Immunogen:	A portion of amino acids 317-347 from the human protein was used as the immunogen for this MMP1 antibody.
Isotype:	Ig Fraction
Purification:	Antigen affinity purified

Target Details

Target:	MMP1
Alternative Name:	MMP1 (MMP1 Products)
Background:	Proteins of the matrix metalloproteinase (MMP) family are involved in the breakdown of extracellular matrix in normal physiological processes, such as embryonic development, reproduction, and tissue remodeling, as well as in disease processes, such as arthritis and

Target Details

metastasis. Most MMP's are secreted as inactive proproteins which are activated when cleaved by extracellular proteinases. This gene encodes a secreted enzyme which breaks down the interstitial collagens, types I, II, and III. The gene is part of a cluster of MMP genes which localize to chromosome 11q22.3. Alternative splicing results in multiple transcript variants.

UniProt: [P03956](#)

Application Details

Application Notes: Titration of the MMP1 antibody may be required due to differences in protocols and secondary/substrate sensitivity.\. Western blot: 1:1000,IHC (Paraffin): 1:50-1:100,Immunofluorescence: 1:10-1:50

Restrictions: For Research Use only

Handling

Format: Liquid

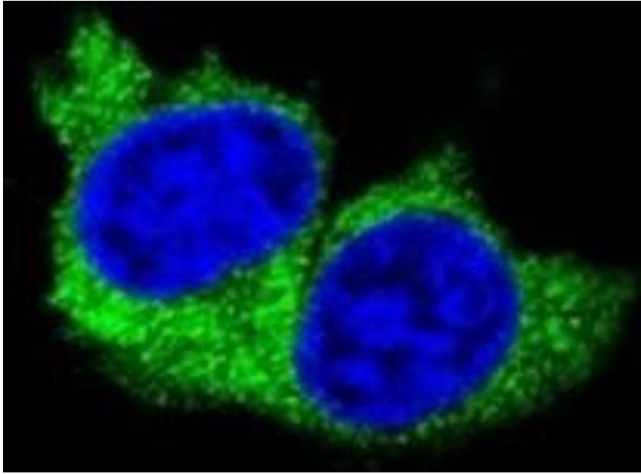
Buffer: In 1X PBS, pH 7.4, with 0.09 % sodium azide

Preservative: Sodium azide

Precaution of Use: This product contains Sodium azide: a POISONOUS AND HAZARDOUS SUBSTANCE which should be handled by trained staff only.

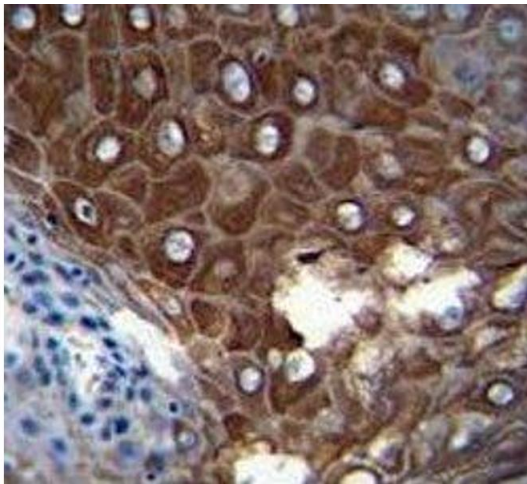
Storage: -20 °C

Storage Comment: Aliquot the MMP1 antibody and store frozen at -20°C or colder. Avoid repeated freeze-thaw cycles.



Immunofluorescence

Image 1. Confocal immunofluorescent analysis of MMP1 antibody with MDA-MB231 cells followed by Alexa Fluor 488-conjugated goat anti-rabbit IgG (green). DAPI was used as a nuclear counterstain (blue).



Immunohistochemistry

Image 2. MMP1 antibody immunohistochemistry analysis in formalin fixed and paraffin embedded human esophageal carcinoma



Western Blotting

Image 3. MMP1 antibody western blot analysis in MDA-MB231 lysate.

Please check the [product details page](#) for more images. Overall 5 images are available for ABIN3031709.