

Datasheet for ABIN3031716  
**anti-MMP24 antibody (N-Term)**[Go to Product page](#)

## 2 Images

## Overview

|                      |                                      |
|----------------------|--------------------------------------|
| Quantity:            | 100 µg                               |
| Target:              | MMP24                                |
| Binding Specificity: | N-Term                               |
| Reactivity:          | Human, Mouse, Rat                    |
| Host:                | Rabbit                               |
| Clonality:           | Polyclonal                           |
| Conjugate:           | This MMP24 antibody is un-conjugated |
| Application:         | Western Blotting (WB)                |

## Product Details

|               |   |
|---------------|---|
| Immunogen:    | An amino acid sequence from the N-terminus of human Matrix metalloproteinase-24 (YHEIKSDRKEADIMIFFA) was used as the immunogen for this MMP24 antibody (100% homologous in human, mouse and rat). |
| Isotype:      | IgG   |
| Purification: | Antigen affinity  |

## Target Details

|                   |   |
|-------------------|---|
| Target:           | MMP24   |
| Alternative Name: | MMP24 ( <a href="#">MMP24 Products</a> )  |
| Background:       | Matrix metalloproteinase-24, also known as MT5MMP and previously as MMP25, is an enzyme that in humans is encoded by the MMP24 gene. Proteins of the matrix metalloproteinase |

## Target Details

---

(MMP) family are involved in the breakdown of extracellular matrix in normal physiological processes, such as embryonic development, reproduction, and tissue remodeling, as well as in disease processes, such as arthritis and metastasis. Most MMPs are secreted as inactive proproteins which are activated when cleaved by extracellular proteinases. However, the protein encoded by this gene is a member of the membrane-type MMP (MT-MMP) subfamily, each member of this subfamily contains a potential transmembrane domain suggesting that these proteins are expressed at the cell surface rather than secreted. This protein activates MMP2 by cleavage. The gene has previously been referred to as MMP25 but has been renamed MMP24. This gene may be a proteoglycanase involved in degradation of proteoglycans, such as dermatan sulfate and chondroitin sulfate proteoglycans.

---

UniProt: [Q9Y5R2](#)

## Application Details

---

Application Notes: The stated application concentrations are suggested starting amounts. Titration of the MMP24 antibody may be required due to differences in protocols and secondary/substrate sensitivity.\.

Western blot: 0.5-1 µg/mL

---

Restrictions: For Research Use only

## Handling

---

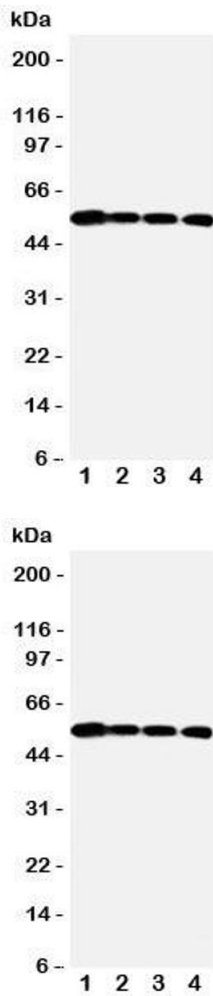
Buffer: 0.5 mg/mL if reconstituted with 0.2 mL sterile DI water

---

Storage: -20 °C

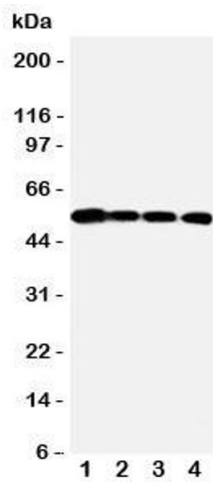
---

Storage Comment: After reconstitution, the MMP24 antibody can be stored for up to one month at 4°C. For long-term, aliquot and store at -20°C. Avoid repeated freezing and thawing.



Western Blotting

**Image 1.** Western blot testing of MMP24 antibody and Lane 1: PANC; 2: HeLa; 3: SMMC-7721; 4: A549 cell lysate



Western Blotting

**Image 2.** Western blot testing of MMP24 antibody and Lane 1: PANC