



[Go to Product page](#)

Datasheet for ABIN3031723
anti-MMP7 antibody (AA 117-146)

5 Images

Overview

Quantity:	0.4 mL
Target:	MMP7
Binding Specificity:	AA 117-146
Reactivity:	Human
Host:	Rabbit
Clonality:	Polyclonal
Conjugate:	This MMP7 antibody is un-conjugated
Application:	Western Blotting (WB), Immunohistochemistry (IHC), ELISA, Immunofluorescence (IF)

Product Details

Immunogen:	A portion of amino acids 117-146 from the human protein was used as the immunogen for this MMP7 antibody.
Isotype:	Ig Fraction
Purification:	Purified

Target Details

Target:	MMP7
Alternative Name:	MMP7 (MMP7 Products)
Background:	Proteins of the matrix metalloproteinase (MMP) family are involved in the breakdown of extracellular matrix in normal physiological processes, such as embryonic development, reproduction, and tissue remodeling, as well as in disease processes, such as arthritis and

Target Details

metastasis. Most MMPs are secreted as inactive proproteins which are activated when cleaved by extracellular proteinases. MMP7 degrades proteoglycans, fibronectin, elastin and casein and differs from most MMP family members in that it lacks a conserved C-terminal protein domain. The enzyme is involved in wound healing, and studies in mice suggest that it regulates the activity of defensins in intestinal mucosa. The gene is part of a cluster of MMP genes which localize to chromosome 11q22.3.

UniProt: [P09237](#)

Pathways: [Production of Molecular Mediator of Immune Response](#)

Application Details

Application Notes: Titration of the MMP7 antibody may be required due to differences in protocols and secondary/substrate sensitivity.\. Western blot: 1:1000,IHC (Paraffin): 1:50-1:100,Immunofluorescence: 1:10-1:50

Restrictions: For Research Use only

Handling

Format: Liquid

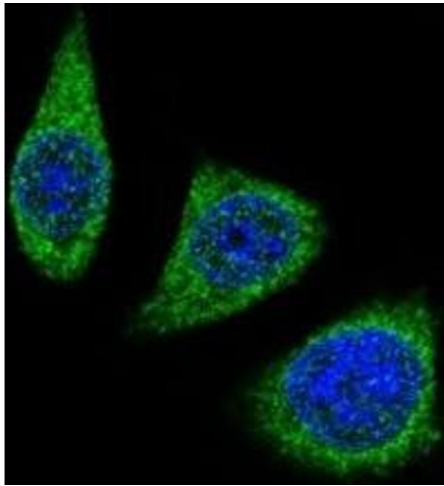
Buffer: In 1X PBS, pH 7.4, with 0.09 % sodium azide

Preservative: Sodium azide

Precaution of Use: This product contains Sodium azide: a POISONOUS AND HAZARDOUS SUBSTANCE which should be handled by trained staff only.

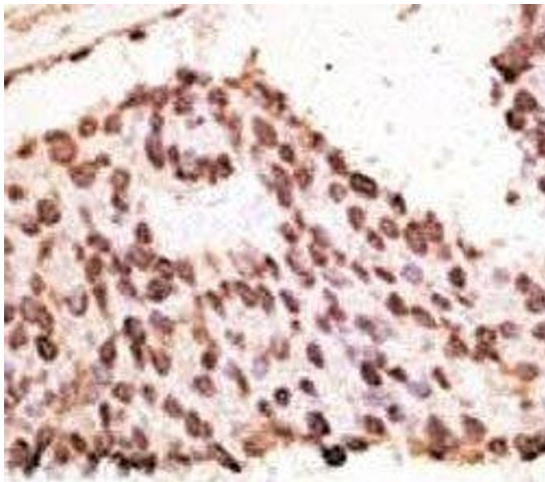
Storage: -20 °C

Storage Comment: Aliquot the MMP7 antibody and store frozen at -20°C or colder. Avoid repeated freeze-thaw cycles.



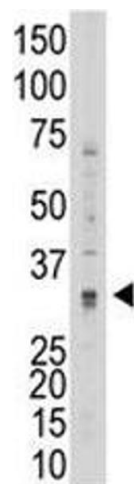
Immunofluorescence

Image 1. Confocal immunofluorescent analysis of MMP7 antibody with 293 cells followed by Alexa Fluor 488-conjugated goat rabbit IgG (green). DAPI was used as a nuclear counterstain (blue).



Immunohistochemistry

Image 2. IHC analysis of FFPE human breast carcinoma tissue stained with the MMP7 antibody



Western Blotting

Image 3. Western blot testing of MMP7 antibody and 293 cell lysate

Please check the [product details page](#) for more images. Overall 5 images are available for ABIN3031723.