

Datasheet for ABIN3031734
anti-MDM2 antibody (AA 141-176)



[Go to Product page](#)

5 Images

Overview

| | |
|----------------------|---|
| Quantity: | 0.4 mL |
| Target: | MDM2 |
| Binding Specificity: | AA 141-176 |
| Reactivity: | Human |
| Host: | Rabbit |
| Clonality: | Polyclonal |
| Conjugate: | This MDM2 antibody is un-conjugated |
| Application: | Western Blotting (WB), ELISA, Immunohistochemistry (IHC), Immunofluorescence (IF) |

Product Details

| | |
|---------------|---|
| Immunogen: | A portion of amino acids 141-176 from the human protein was used as the immunogen for this MDM2 antibody. |
| Isotype: | Ig Fraction |
| Purification: | Antigen affinity purified |

Target Details

| | |
|-------------------|--|
| Target: | MDM2 |
| Alternative Name: | MDM2 (MDM2 Products) |
| Background: | MDM2 is a target of the transcription factor tumor protein p53. This protein is a nuclear phosphoprotein that binds and inhibits transactivation by tumor protein p53, as part of an autoregulatory negative feedback loop. Overexpression of MDM2 can result in excessive |

Target Details

inactivation of tumor protein p53, diminishing its tumor suppressor function. This protein has E3 ubiquitin ligase activity, which targets tumor protein p53 for proteasomal degradation. This protein also affects the cell cycle, apoptosis, and tumorigenesis through interactions with other proteins, including retinoblastoma 1 and ribosomal protein L5.

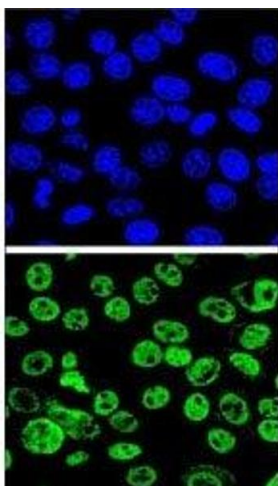
| | |
|-----------|---|
| UniProt: | Q00987 |
| Pathways: | p53 Signaling , PI3K-Akt Signaling , Cell Division Cycle , Fc-epsilon Receptor Signaling Pathway , EGFR Signaling Pathway , Neurotrophin Signaling Pathway , Autophagy , Ubiquitin Proteasome Pathway |

Application Details

| | |
|--------------------|--|
| Application Notes: | Titration of the MDM2 antibody may be required due to differences in protocols and secondary/substrate sensitivity.\. Western blot: 1:1000,IHC (Paraffin): 1:10-1:50,Immunofluorescence: 1:10-1:50 |
| Restrictions: | For Research Use only |

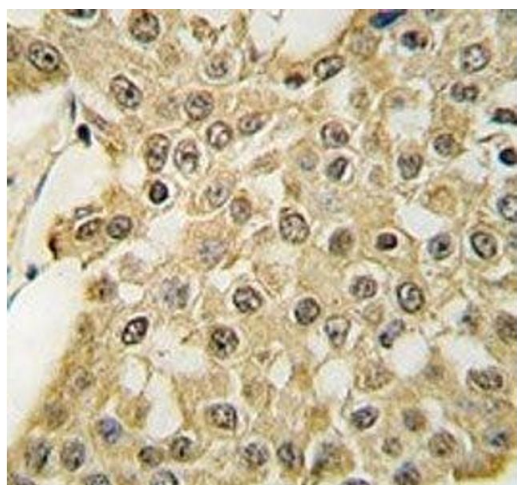
Handling

| | |
|--------------------|--|
| Format: | Liquid |
| Buffer: | In 1X PBS pH 7.4 with 0.09 % sodium azide |
| Preservative: | Sodium azide |
| Precaution of Use: | This product contains Sodium azide: a POISONOUS AND HAZARDOUS SUBSTANCE which should be handled by trained staff only. |
| Storage: | -20 °C |
| Storage Comment: | Aliquot the MDM2 antibody and store frozen at -20°C or colder. Avoid repeated freeze-thaw cycles. |



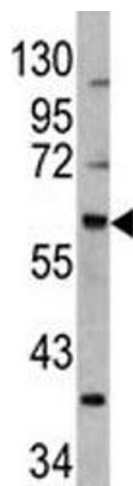
Immunofluorescence

Image 1. Confocal immunofluorescent analysis of MDM2 antibody with HeLa cells followed by Alexa Fluor 488-conjugated goat anti-rabbit IgG (green). DAPI was used as a nuclear counterstain (blue).



Immunohistochemistry

Image 2. IHC analysis of FFPE human breast carcinoma tissue stained with the MDM2 antibody



Western Blotting

Image 3. Western blot analysis of MDM2 antibody and 293 lysate

Please check the [product details page](#) for more images. Overall 5 images are available for ABIN3031734.