

Datasheet for ABIN3031739  
**anti-MDM2 antibody (AA 393-424)**

## 7 Images

[Go to Product page](#)

## Overview

Quantity:	0.2 mL
Target:	MDM2
Binding Specificity:	AA 393-424
Reactivity:	Human, Mouse
Host:	Rabbit
Clonality:	Polyclonal
Conjugate:	This MDM2 antibody is un-conjugated
Application:	Western Blotting (WB), ELISA, Immunohistochemistry (IHC)

## Product Details

Immunogen:	A portion of amino acids 393-424 from the human protein was used as the immunogen for this anti-MDM2 antibody.
Isotype:	Ig Fraction
Purification:	Purified

## Target Details

Target:	MDM2
Alternative Name:	MDM2 ( <a href="#">MDM2 Products</a> )
Background:	MDM2 is a target of the transcription factor tumor protein p53. The encoded protein is a nuclear phosphoprotein that binds and inhibits transactivation by tumor protein p53, as part of an autoregulatory negative feedback loop. Overexpression of MDM2 can result in excessive

## Target Details

inactivation of tumor protein p53, diminishing its tumor suppressor function. This protein has E3 ubiquitin ligase activity, which targets tumor protein p53 for proteasomal degradation. This protein also affects the cell cycle, apoptosis, and tumorigenesis through interactions with other proteins, including retinoblastoma 1 and ribosomal protein L5.

UniProt: [Q00987](#)

Pathways: [p53 Signaling](#), [PI3K-Akt Signaling](#), [Cell Division Cycle](#), [Fc-epsilon Receptor Signaling Pathway](#), [EGFR Signaling Pathway](#), [Neurotrophin Signaling Pathway](#), [Autophagy](#), [Ubiquitin Proteasome Pathway](#)

## Application Details

Application Notes: Titration of the anti-MDM2 antibody may be required due to differences in protocols and secondary/substrate sensitivity.\. Western blot: 1:1000,IHC (Paraffin): 1:10-1:50

Restrictions: For Research Use only

## Handling

Format: Liquid

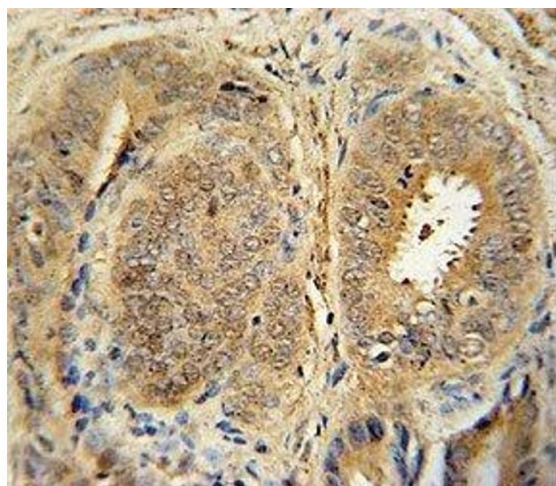
Buffer: In 1X PBS pH 7.4 with 0.09 % sodium azide

Preservative: Sodium azide

Precaution of Use: This product contains Sodium azide: a POISONOUS AND HAZARDOUS SUBSTANCE which should be handled by trained staff only.

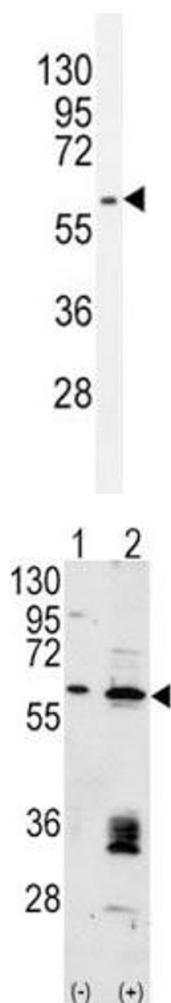
Storage: -20 °C

Storage Comment: Aliquot the anti-MDM2 antibody and store frozen at -20°C or colder. Avoid repeated freeze-thaw cycles.



#### Immunohistochemistry

**Image 1.** Anti-MDM2 antibody immunohistochemistry analysis in formalin fixed and paraffin embedded human prostate cancer.



#### Western Blotting

**Image 2.** Anti-MDM2 antibody western blot analysis in HepG2 lysate

#### Western Blotting

**Image 3.** Western blot analysis of anti-MDM2 antibody and 293 cell lysate (2 ug/lane) either nontransfected (Lane 1) or transiently transfected with the MDM2 gene (2).

Please check the [product details page](#) for more images. Overall 7 images are available for ABIN3031739.