

Datasheet for ABIN3031752

anti-Mesothelin antibody (AA 306-576)

4 Images

[Go to Product page](#)

Overview

Quantity:	100 µg
Target:	Mesothelin (MSLN)
Binding Specificity:	AA 306-576
Reactivity:	Human
Host:	Rabbit
Clonality:	Polyclonal
Conjugate:	This Mesothelin antibody is un-conjugated
Application:	ELISA, Western Blotting (WB), Flow Cytometry (FACS), Immunohistochemistry (Paraffin-embedded Sections) (IHC (p))

Product Details

Immunogen:	Human partial recombinant protein (AA 306-576) was used as the immunogen for this Mesothelin antibody.
Isotype:	IgG
Purification:	Antigen affinity

Target Details

Target:	Mesothelin (MSLN)
Alternative Name:	Mesothelin (MSLN Products)
Background:	Mesothelin, also known as MSLN or MPF, is a protein that in humans is encoded by the MSLN gene. This gene is mapped to 16p13.3. This gene encodes a precursor protein that is cleaved

Target Details

into two products, Megakaryocyte potentiating factor and Mesothelin. Megakaryocyte potentiation factor functions as a cytokine that can stimulate colony formation in bone marrow megakaryocytes. Mesothelin is a glycosylphosphatidylinositol-anchored cell-surface protein that may function as a cell adhesion protein. This protein is overexpressed in epithelial mesotheliomas, ovarian cancers and in specific squamous cell carcinomas.

Gene ID: 10232

Pathways: [EGFR Signaling Pathway](#), [Positive Regulation of Peptide Hormone Secretion](#), [Intracellular Steroid Hormone Receptor Signaling Pathway](#), [Steroid Hormone Mediated Signaling Pathway](#), [Carbohydrate Homeostasis](#), [cAMP Metabolic Process](#), [Regulation of G-Protein Coupled Receptor Protein Signaling](#), [Positive Regulation of Endopeptidase Activity](#), [Regulation of Carbohydrate Metabolic Process](#)

Application Details

Application Notes: The stated application concentrations are suggested starting amounts. Titration of the Mesothelin antibody may be required due to differences in protocols and secondary/substrate sensitivity. Western blot: 0.5-1 µg/mL, IHC (Paraffin): 0.5-1 µg/mL, FACS: 1-3 µg/10⁶ cells, ELISA: 0.1-0.5 µg/mL

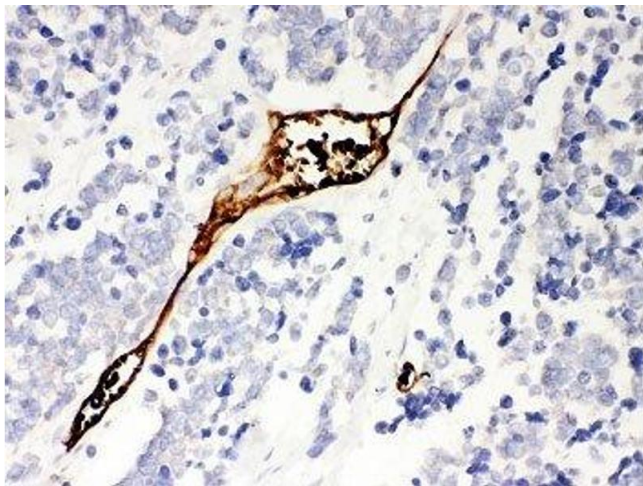
Restrictions: For Research Use only

Handling

Buffer: 0.5 mg/mL if reconstituted with 0.2 mL sterile DI water

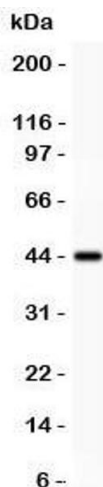
Storage: -20 °C

Storage Comment: After reconstitution, the Mesothelin antibody can be stored for up to one month at 4°C. For long-term, aliquot and store at -20°C. Avoid repeated freezing and thawing.



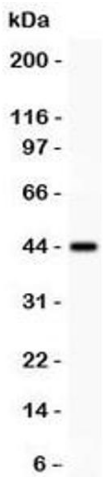
Immunohistochemistry

Image 1. IHC-P: Mesothelin antibody testing of human lung cancer tissue



Western Blotting

Image 2. Western blot testing of Mesothelin antibody and recombinant human protein (0.5ng)



Western Blotting

Image 3. Western blot testing of Mesothelin antibody and recombinant human protein (0.5ng)

Please check the [product details page](#) for more images. Overall 4 images are available for ABIN3031752.