

Datasheet for ABIN3031776

anti-Microtubule Star antibody (N-Term)[Go to Product page](#)**1** Image

Overview

| | |
|----------------------|--|
| Quantity: | 100 µg |
| Target: | Microtubule Star (MTS) |
| Binding Specificity: | N-Term |
| Reactivity: | Human, Mouse, Rat |
| Host: | Rabbit |
| Clonality: | Polyclonal |
| Conjugate: | This Microtubule Star antibody is un-conjugated |
| Application: | Immunohistochemistry (Paraffin-embedded Sections) (IHC (p)), Western Blotting (WB) |

Product Details

| | |
|---------------|---|
| Immunogen: | An amino acid sequence from the N-terminus of human PPP2CA (FTKELDQWIEQLNEC) was used as the immunogen for this PP2Ac antibody (100% homologous in human, mouse and rat). |
| Isotype: | IgG |
| Purification: | Antigen affinity |

Target Details

| | |
|-------------------|--|
| Target: | Microtubule Star (MTS) |
| Alternative Name: | PP2Ac |
| Background: | The catalytic subunit of human protein phosphatase 2A (PPP2CA) encodes a 309-amino acid polypeptide. It is predicted to be important for phosphatase enzymatic activity. Methylation of the C-terminal leucine residue (Leu309) of PPP2CA is known to regulate catalytic activity in |

Target Details

vitro. Furthermore, PP2A has a fundamental role in cardiac function, and suggests that disturbances in protein phosphatase expression and activity may cause or exacerbate the course of cardiac diseases.

UniProt: [P67775](#)

Pathways: [PI3K-Akt Signaling](#), [Mitotic G1-G1/S Phases](#), [Hepatitis C](#), [Toll-Like Receptors Cascades](#)

Application Details

Application Notes: Variations in secondary/substrate sensitivities and test protocols may require the PP2Ac antibody to be titrated for optimal performance.\. Western blot: 0.5-1 µg/mL,IHC (Paraffin): 0.5-1 µg/mL

Restrictions: For Research Use only

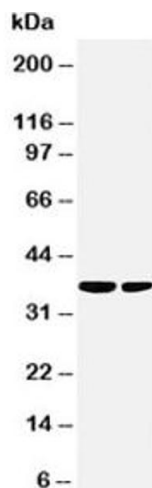
Handling

Buffer: 0.5 mg/mL if reconstituted with 0.2 mL sterile DI water

Storage: -20 °C

Storage Comment: The lyophilized PP2Ac antibody can be stored at 4°C to -20°C. After reconstitution, aliquot and store at -20°C. Avoid repeated freeze/thaws.

Images



Western Blotting

Image 1. Western blot testing of PP2Ac antibody and Lane 1: rat kidney