

Datasheet for ABIN3031793
anti-LC3C antibody (AA 1-30)

5 Images

[Go to Product page](#)

Overview

Quantity:	0.4 mL
Target:	LC3C (MAP1LC3C)
Binding Specificity:	AA 1-30
Reactivity:	Human
Host:	Rabbit
Clonality:	Polyclonal
Conjugate:	This LC3C antibody is un-conjugated
Application:	ELISA, Western Blotting (WB), Immunohistochemistry (IHC)

Product Details

Immunogen:	A portion of amino acids 1-30 from the human protein was used as the immunogen for this LC3C antibody.
Isotype:	Ig Fraction
Purification:	Purified

Target Details

Target:	LC3C (MAP1LC3C)
Alternative Name:	LC3C (MAP1LC3C Products)
Background:	Macroautophagy is the major inducible pathway for the general turnover of cytoplasmic constituents in eukaryotic cells, it is also responsible for the degradation of active cytoplasmic enzymes and organelles during nutrient starvation. Macroautophagy involves the formation of

Target Details

double-membrane bound autophagosomes which enclose the cytoplasmic constituent targeted for degradation in a membrane bound structure, which then fuse with the lysosome (or vacuole) releasing a single-membrane bound autophagic bodies which are then degraded within the lysosome (or vacuole). MAP1A and MAP1B are microtubule-associated proteins which mediate the physical interactions between microtubules and components of the cytoskeleton. These proteins are involved in formation of autophagosomal vacuoles (autophagosomes). MAP1A and MAP1B each consist of a heavy chain subunit and multiple light chain subunits. MAP1LC3c is one of the light chain subunits and can associate with either MAP1A or MAP1B. The precursor molecule is cleaved by APG4B/ATG4B to form the cytosolic form, LC3-I. This is activated by APG7L/ATG7, transferred to ATG3 and conjugated to phospholipid to form the membrane-bound form, LC3-II.

UniProt: [Q9BXW4](#)

Pathways: [Autophagy](#)

Application Details

Application Notes: Titration of the LC3C antibody may be required due to differences in protocols and secondary/substrate sensitivity.\. Western blot: 1:1000,IHC (Paraffin): 1:50-1:100

Restrictions: For Research Use only

Handling

Format: Liquid

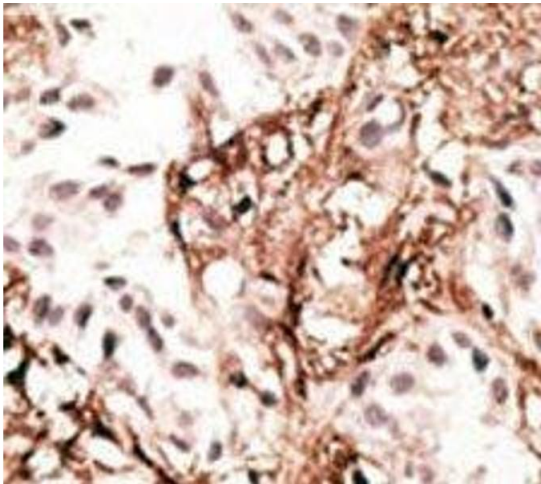
Buffer: In 1X PBS pH 7.4 with 0.09 % sodium azide

Preservative: Sodium azide

Precaution of Use: This product contains Sodium azide: a POISONOUS AND HAZARDOUS SUBSTANCE which should be handled by trained staff only.

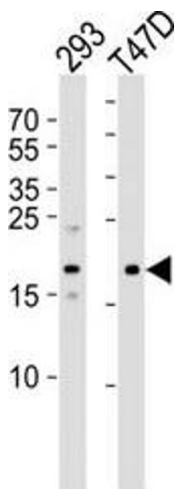
Storage: -20 °C

Storage Comment: Aliquot the LC3C antibody and store frozen at -20°C or colder. Avoid repeated freeze-thaw cycles.



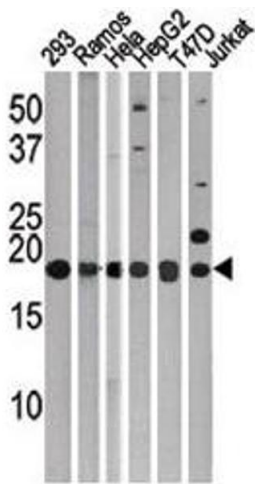
Immunohistochemistry

Image 1. IHC analysis of FFPE human breast carcinoma tissue stained with the LC3C antibody



Western Blotting

Image 2. Western blot analysis of using LC3C antibody at 1:1000.



Western Blotting

Image 3. Western blot testing of LC3C antibody.

Please check the [product details page](#) for more images. Overall 5 images are available for ABIN3031793.