

Datasheet for ABIN3031796
anti-tau antibody (AA 677-707)[Go to Product page](#)

5 Images

Overview

| | |
|----------------------|---|
| Quantity: | 0.4 mL |
| Target: | tau |
| Binding Specificity: | AA 677-707 |
| Reactivity: | Human |
| Host: | Rabbit |
| Clonality: | Polyclonal |
| Conjugate: | This tau antibody is un-conjugated |
| Application: | Western Blotting (WB), ELISA, Immunohistochemistry (IHC), Immunofluorescence (IF) |

Product Details

| | |
|-----------------------------|--|
| Immunogen: | A portion of amino acids 677-707 from the human protein was used as the immunogen for this TAU antibody. |
| Isotype: | Ig Fraction |
| Cross-Reactivity (Details): | Expected species reactivity: Mouse, Rat, Bovine |
| Purification: | Purified |

Target Details

| | |
|-------------------|--|
| Target: | tau |
| Alternative Name: | tau (tau Products) |
| Background: | TAU/MAPT promotes microtubule assembly and stability, and might be involved in the |

Target Details

establishment and maintenance of neuronal polarity. The C-terminus binds axonal microtubules while the N-terminus binds neural plasma membrane components, suggesting that tau functions as a linker protein between both. Axonal polarity is predetermined by TAU/MAPT localization (in the neuronal cell) in the domain of the cell body defined by the centrosome. The short isoforms allow plasticity of the cytoskeleton whereas the longer isoforms may preferentially play a role in its stabilization. [UniProt]

UniProt: [P10636](#)

Application Details

Application Notes: Titration of the TAU antibody may be required due to differences in protocols and secondary/substrate sensitivity.\. Western blot: 1:1000,IHC (Paraffin): 1:50-1:100,Immunofluorescence: 1:10-1:50

Restrictions: For Research Use only

Handling

Format: Liquid

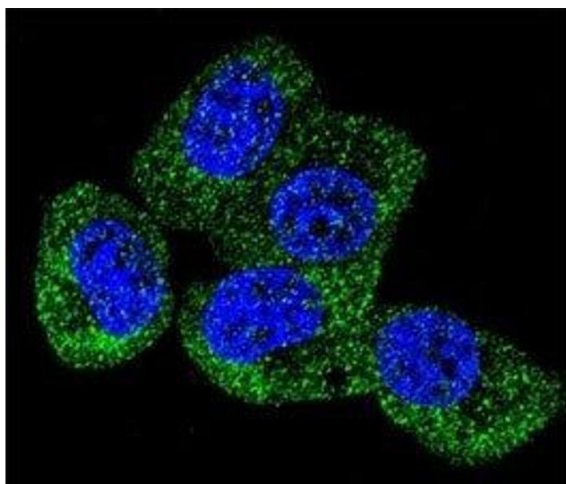
Buffer: In 1X PBS pH 7.4 with 0.09 % sodium azide

Preservative: Sodium azide

Precaution of Use: This product contains Sodium azide: a POISONOUS AND HAZARDOUS SUBSTANCE which should be handled by trained staff only.

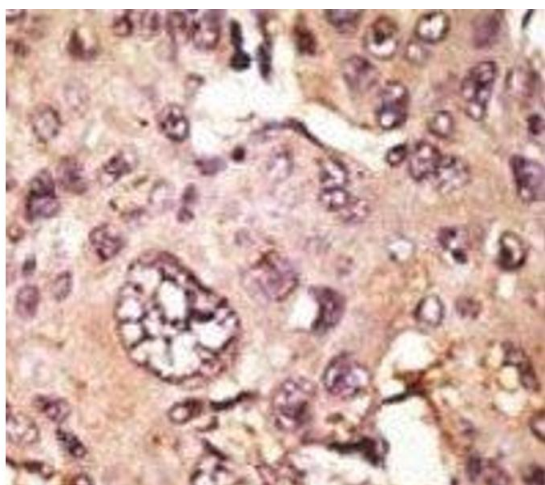
Storage: -20 °C

Storage Comment: Aliquot the TAU antibody and store frozen at -20°C or colder. Avoid repeated freeze-thaw cycles.



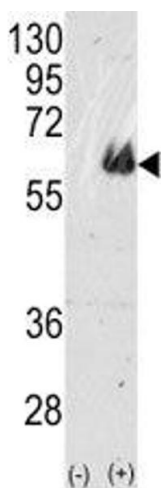
Immunofluorescence

Image 1. Confocal immunofluorescent analysis of TAU antibody with MCF-7 cells followed by Alexa Fluor 488-conjugated goat anti-rabbit IgG (green). DAPI was used as a nuclear counterstain (blue).



Immunohistochemistry

Image 2. IHC analysis of FFPE human hepatocarcinoma tissue stained with the TAU antibody



Western Blotting

Image 3. Western blot analysis of TAU antibody and 293 cell lysate (2 ug/lane) either nontransfected (Lane 1) or transiently transfected with the TAU gene (2).

Please check the [product details page](#) for more images. Overall 5 images are available for ABIN3031796.