

Datasheet for ABIN3031801
anti-MCM2 antibody (AA 649-677)[Go to Product page](#)

5 Images

Overview

Quantity:	0.4 mL
Target:	MCM2
Binding Specificity:	AA 649-677
Reactivity:	Human, Mouse
Host:	Rabbit
Clonality:	Polyclonal
Conjugate:	This MCM2 antibody is un-conjugated
Application:	Western Blotting (WB), Immunohistochemistry (IHC), ELISA

Product Details

Immunogen:	A portion of amino acids 649-677 from the human protein was used as the immunogen for this MCM2 antibody.
Isotype:	Ig Fraction
Cross-Reactivity (Details):	Expected species reactivity: Xenopus
Purification:	Antigen affinity purified

Target Details

Target:	MCM2
Alternative Name:	MCM2 (MCM2 Products)
Background:	MCM2 is one of the highly conserved mini-chromosome maintenance proteins (MCM) that are

Target Details

involved in the initiation of eukaryotic genome replication. The hexameric protein complex formed by MCM proteins is a key component of the pre-replication complex (pre_RC) and may be involved in the formation of replication forks and in the recruitment of other DNA replication related proteins. This protein forms a complex with MCM4, 6, and 7, and has been shown to regulate the helicase activity of the complex. This protein is phosphorylated, and thus regulated by, protein kinases CDC2 and CDC7.

UniProt: [P49736](#)

Pathways: [DNA Damage Repair](#), [Mitotic G1-G1/S Phases](#), [DNA Replication](#), [Chromatin Binding](#), [Synthesis of DNA](#)

Application Details

Application Notes: Titration of the MCM2 antibody may be required due to differences in protocols and secondary/substrate sensitivity.\. Western blot: 1:1000-2000,IHC (Paraffin): 1:50-1:100

Restrictions: For Research Use only

Handling

Format: Liquid

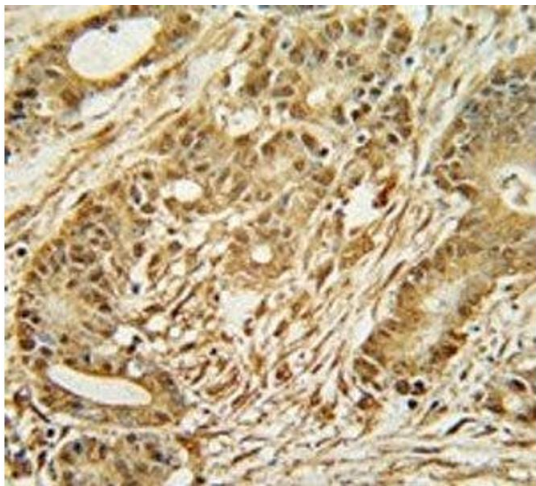
Buffer: In 1X PBS, pH 7.4, with 0.09 % sodium azide

Preservative: Sodium azide

Precaution of Use: This product contains Sodium azide: a POISONOUS AND HAZARDOUS SUBSTANCE which should be handled by trained staff only.

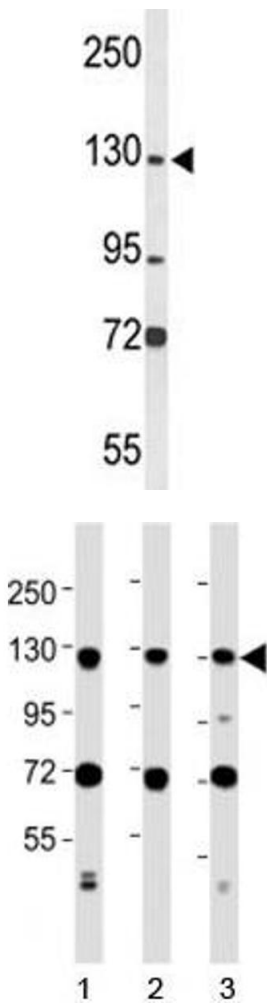
Storage: -20 °C

Storage Comment: Aliquot the MCM2 antibody and store frozen at -20°C or colder. Avoid repeated freeze-thaw cycles.



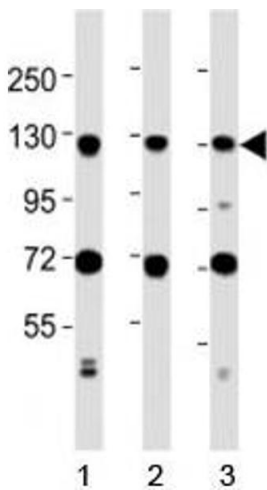
Immunohistochemistry

Image 1. MCM2 antibody immunohistochemistry analysis in formalin fixed and paraffin embedded human colon carcinoma.



Western Blotting

Image 2. Western blot analysis of MCM2 antibody and HL-60 lysate



Western Blotting

Image 3. Western blot testing of MCM2 antibody at 1:2000 dilution. Lane 1: Jurkat lysate; 2: MCF-7 lysate; 3: NIH3T3 lysate; Predicted molecular weight : 102 kDa.

Please check the [product details page](#) for more images. Overall 5 images are available for ABIN3031801.