

Datasheet for ABIN3031815  
**anti-MAVS antibody (AA 1-30)**

## 2 Images

[Go to Product page](#)

## Overview

Quantity:	0.4 mL
Target:	MAVS
Binding Specificity:	AA 1-30
Reactivity:	Mouse
Host:	Rabbit
Clonality:	Polyclonal
Conjugate:	This MAVS antibody is un-conjugated
Application:	Western Blotting (WB), ELISA

## Product Details

Immunogen:	A portion of amino acids 1-30 from the mouse protein was used as the immunogen for this Ips-1 antibody.
Isotype:	Ig Fraction
Purification:	Antigen affinity purified

## Target Details

Target:	MAVS
Alternative Name:	Ips-1 ( <a href="#">MAVS Products</a> )
Background:	Required for innate immune defense against viruses. Acts downstream of DDX58 and IFIH1/MDA5, which detect intracellular dsRNA produced during viral replication, to coordinate pathways leading to the activation of NF-kappa-B, IRF3 and IRF7, and to the subsequent

## Target Details

induction of antiviral cytokines such as IFN-beta and RANTES (CCL5). May activate the same pathways following detection of extracellular dsRNA by TLR3. May protect cells from apoptosis (By similarity).

UniProt: [Q8VCF0](#)

Pathways: [Activation of Innate immune Response](#), [Inositol Metabolic Process](#), [Hepatitis C](#)

## Application Details

Application Notes: Titration of the Ips-1 antibody may be required due to differences in protocols and secondary/substrate sensitivity.\. Western blot: 1:1000

Restrictions: For Research Use only

## Handling

Format: Liquid

Buffer: In 1X PBS, pH 7.4, with 0.09 % sodium azide

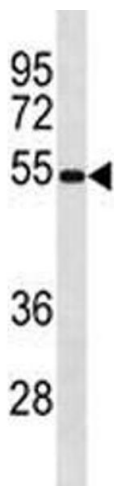
Preservative: Sodium azide

Precaution of Use: This product contains Sodium azide: a POISONOUS AND HAZARDOUS SUBSTANCE which should be handled by trained staff only.

Storage: -20 °C

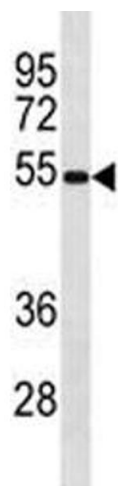
Storage Comment: Aliquot the Ips-1 antibody and store frozen at -20°C or colder. Avoid repeated freeze-thaw cycles.

## Images



### Western Blotting

**Image 1.** Ips-1 antibody western blot analysis in mouse spleen tissue lysate.



#### Western Blotting

**Image 2.** Ips-1 antibody western blot analysis in mouse spleen tissue lysate.