

Datasheet for ABIN3031818
anti-MFN2 antibody (AA 447-476)

5 Images

[Go to Product page](#)

Overview

Quantity:	0.4 mL
Target:	MFN2
Binding Specificity:	AA 447-476
Reactivity:	Human
Host:	Rabbit
Clonality:	Polyclonal
Conjugate:	This MFN2 antibody is un-conjugated
Application:	Western Blotting (WB), Immunohistochemistry (IHC), ELISA, Flow Cytometry (FACS)

Product Details

Immunogen:	A portion of amino acids 447-476 from the human protein was used as the immunogen for this MFN2 antibody.
Isotype:	Ig Fraction
Cross-Reactivity (Details):	Expected species reactivity: Mouse, Rat
Purification:	Antigen affinity purified

Target Details

Target:	MFN2
Alternative Name:	MFN2 (MFN2 Products)
Background:	MFN2 is a mitochondrial membrane protein that participates in mitochondrial fusion and

Target Details

contributes to the maintenance and operation of the mitochondrial network. This protein is involved in the regulation of vascular smooth muscle cell proliferation, and it may play a role in the pathophysiology of obesity. Mutations in this gene cause Charcot-Marie-Tooth disease type 2A2, and hereditary motor and sensory neuropathy VI, which are both disorders of the peripheral nervous system.

UniProt: [O95140](#)

Pathways: [Skeletal Muscle Fiber Development](#)

Application Details

Application Notes: Titration of the MFN2 antibody may be required due to differences in protocols and secondary/substrate sensitivity.\. Western blot: 1:1000,IHC (Paraffin): 1:50-1:100,Flow Cytometry: 1:10-1:50

Restrictions: For Research Use only

Handling

Format: Liquid

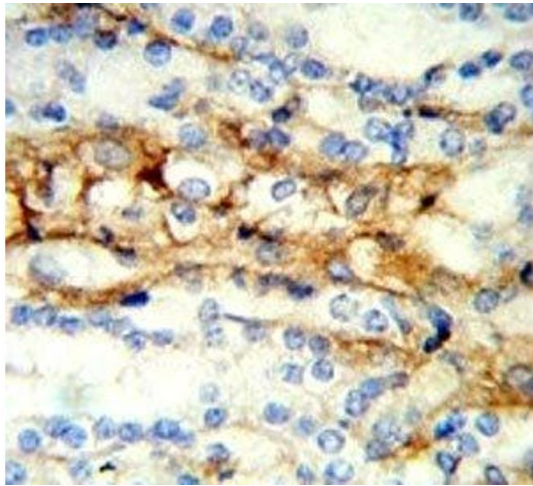
Buffer: In 1X PBS, pH 7.4, with 0.09 % sodium azide

Preservative: Sodium azide

Precaution of Use: This product contains Sodium azide: a POISONOUS AND HAZARDOUS SUBSTANCE which should be handled by trained staff only.

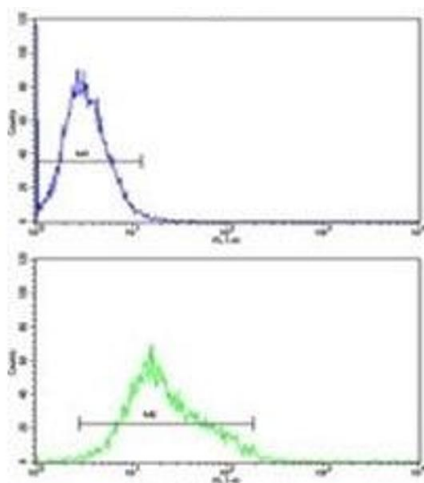
Storage: -20 °C

Storage Comment: Aliquot the MFN2 antibody and store frozen at -20°C or colder. Avoid repeated freeze-thaw cycles.



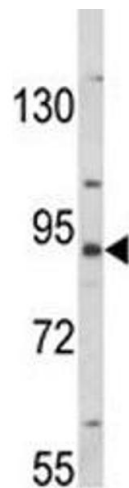
Immunohistochemistry

Image 1. IHC analysis of FFPE mouse kidney stained with MFN2 antibody



Flow Cytometry

Image 2. MFN2 antibody flow cytometric analysis of K562 cells (green) compared to a negative control (blue). FITC-conjugated goat-anti-rabbit secondary Ab was used for the analysis.



Western Blotting

Image 3. Western blot analysis of MFN2 antibody and K562 lysate

Please check the [product details page](#) for more images. Overall 5 images are available for ABIN3031818.