



Datasheet for ABIN3031824
anti-ERK1/2 antibody (pThr202, pTyr204)



[Go to Product page](#)

4 Images

Overview

Quantity:	0.4 mL
Target:	ERK1/2 (MAPK1/3)
Binding Specificity:	pThr202, pTyr204
Reactivity:	Human, Mouse
Host:	Rabbit
Clonality:	Polyclonal
Conjugate:	This ERK1/2 antibody is un-conjugated
Application:	Western Blotting (WB), ELISA, Dot Blot (DB)

Product Details

Immunogen:	This phospho-ERK1/2 antibody was produced from rabbits immunized with a KLH conjugated synthetic phosphopeptide corresponding to amino acid residues surrounding pT202/pY204 of human ERK1/2.
Isotype:	Ig Fraction
Cross-Reactivity (Details):	Expected species reactivity: Rat, Drosophila
Purification:	Antigen affinity purified

Target Details

Target:	ERK1/2 (MAPK1/3)
Alternative Name:	ERK1/2 (MAPK1/3 Products)

Target Details

Background: MAPK3/ERK1 is a member of the MAP kinase family. MAP kinases, also known as extracellular signal-regulated kinases (ERKs), act in a signaling cascade that regulates various cellular processes such as proliferation, differentiation, and cell cycle progression in response to a variety of extracellular signals. This kinase is activated by upstream kinases, resulting in its translocation to the nucleus where it phosphorylates nuclear targets.

UniProt: [P27361](#)

Application Details

Application Notes: Titration of the phospho-ERK1/2 antibody may be required due to differences in protocols and secondary/substrate sensitivity.\. Dot blot: 1:500,Western blot: 1:1000

Restrictions: For Research Use only

Handling

Format: Liquid

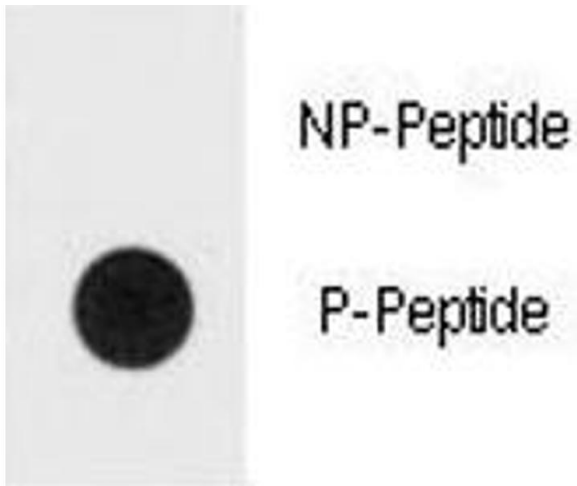
Buffer: In 1X PBS pH 7.4 with 0.09 % sodium azide

Preservative: Sodium azide

Precaution of Use: This product contains Sodium azide: a POISONOUS AND HAZARDOUS SUBSTANCE which should be handled by trained staff only.

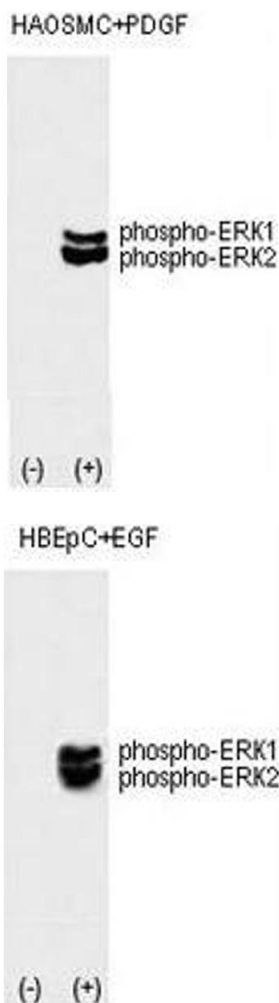
Storage: -20 °C

Storage Comment: Aliquot the phospho-ERK1/2 antibody and store frozen at -20°C or colder. Avoid repeated freeze-thaw cycles.



Dot Blot

Image 1. Dot blot analysis of phospho-ERK1/2 antibody. 50ng of Bi-phos-peptide or nonphosrylated peptide per dot were spotted.



Western Blotting

Image 2. Western blot analysis of phospho-ERK1/2 antibody and HAOSMC cell lysate noninduced (lane 1) or induced with the PDGF (lane 2).

Western Blotting

Image 3. Western blot analysis of phospho-ERK1/2 antibody and HBEpC cell lysate, noninduced (lane 1) or induced with the EGF (lane 2).

Please check the [product details page](#) for more images. Overall 4 images are available for ABIN3031824.